



TABLE OF CONTENTS

AIR DISTRIBUTION PRODUCTS

Ceiling Diffusers.....	2-5
Linear Slot Diffusers & Plenum.....	6-8
Perforated & Round Diffusers.....	9
Diffuser Accessories.....	10-11
Supply Registers.....	12-13
Return/Exhaust Grilles & Registers.....	14-17
VAV Terminal Units & Parts.....	18-19

SHEET METAL PRODUCTS

Takeoff Collars.....	20-22
Flexible Duct & Accessories.....	23
Snaplock Pipe & Fittings.....	24-25
Spiral Pipe & Fittings.....	26-33
Cable Hanger Systems.....	34
Subducts & Flashings.....	35
Access Doors.....	36-37
Dampers & Accessories.....	38-40
Elevator Roof Vents.....	41
Roof Supports & Pipe Flashings.....	42-43
Roof Curbs & Equipment Supports.....	44-45

FAN & VENT PRODUCTS

Roof Exhaust Fans.....	46-49
Inline Fans.....	50-53
Cabinet Fans.....	54-55
Fantech Inline Fans.....	56
Panasonic Fan.....	57
Roof Hoods.....	58
Roof & Wall Caps.....	59
Fan Backdraft Dampers.....	60
Fan Motors & Controls.....	61
Fan Ordering Instructions.....	62-63

MISCELLANEOUS

Cross Reference Chart.....	64-65
Terms & Conditions.....	69

CEILING DIFFUSERS



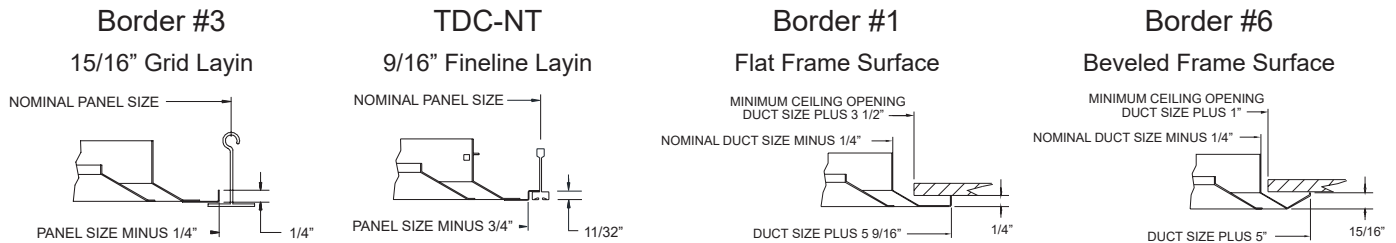
TDC - Steel Diffuser



Features

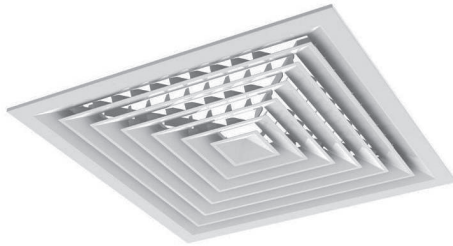
- All steel construction
- White finish
- Air patterns (1-, 2-, 3-, or 4-way)

Frame Dimensional Data



Size	Air Patterns	CFM @ 30 NC	TDC Border #3 24x24 Layin Part #	TDC-NT 24x24 Layin Part #	TDC Border #1 Surface Mount Part #	TDC Border #6 Surface Mount Part #	Damper Part #	Transition 3" Deep Part #
6 x 6	1-way	150	\$110 TDC1B36X6	-	\$67 TDC1B16X6	-	\$27 AG956X6	\$35 SRAC6X6-6 SRAC6X6-5
	2-way		\$110 TDC2B36X6	-	\$67 TDC2B16X6	-		
	Corner		\$110 TDC2GB36X6	-	\$67 TDC2GB16X6	-		
	3-way		\$110 TDC3B36X6	-	\$67 TDC3B16X6	\$67 TDC3B66X6		
	4-way		\$110 TDC4B36X6	\$161 TDC4NT6X6	\$67 TDC4B16X6	\$67 TDC4B66X6		
9 x 9	1-way	300	\$126 TDC1B39X9	-	\$83 TDC1B19X9	-	\$40 AG959X9	\$44 SRAC9X9-8 SRAC9X9-7 SRAC9X9-6
	2-way		\$126 TDC2B39X9	-	\$83 TDC2B19X9	-		
	Corner		\$126 TDC2GB39X9	-	\$83 TDC2GB19X9	-		
	3-way		\$126 TDC3B39X9	-	\$83 TDC3B19X9	\$83 TDC3B69X9		
	4-way		\$126 TDC4B39X9	\$177 TDC4NT9X9	\$83 TDC4B19X9	\$83 TDC4B69X9		
12 x 12	1-way	600	\$157 TDC1B312X12	-	\$115 TDC1B112X12	-	\$49 AG9512X12	\$52 SRAC12X12-12 SRAC12X12-10 SRAC12X12-9 SRAC12X12-8
	2-way		\$157 TDC2B312X12	-	\$115 TDC2B112X12	-		
	Corner		\$157 TDC2GB312X12	-	\$115 TDC2GB112X12	-		
	3-way		\$157 TDC3B312X12	-	\$115 TDC3B112X12	\$115 TDC3B612X12		
	4-way		\$157 TDC4B312X12	\$209 TDC4NT12X12	\$115 TDC4B112X12	\$115 TDC4B612X12		
15 x 15	3-way	900	\$193 TDC3B315X15	-	\$150 TDC3B115X15	-	\$90 AG9515X15	\$64 SRAC15X15-14 SRAC15X15-12 SRAC15X15-10
	4-way		\$193 TDC4B315X15	\$244 TDC4NT15X15	\$150 TDC4B115X15	\$150 TDC4B615X15		
18 x 18	3-way	1250	\$235 TDC3B318X18	-	\$192 TDC3B118X18	-	\$139 AG9518X18	\$78 SRAC18X18-16 SRAC18X18-14 SRAC18X18-12
	4-way		\$235 TDC4B318X18	-	\$192 TDC4B118X18	-		
21 x 21	4-way	1600	\$342 TDC4B321X21	-	-	-	-	-

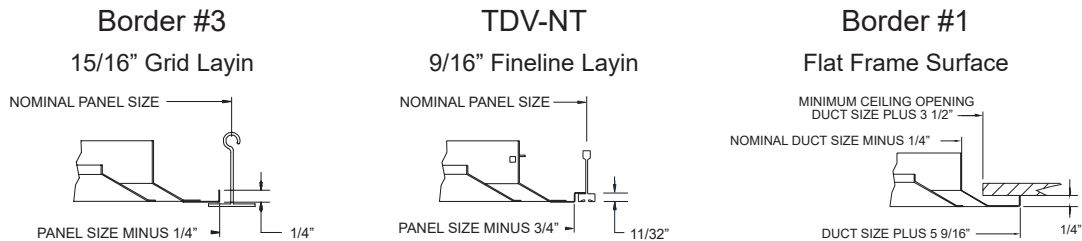
TDV - Steel Induction Vane Diffuser



Features

- All steel construction
- White finish
- Induction vane option
- Air patterns (3- or 4-way)

Frame Dimensional Data



Size	Air Patterns	CFM @ 30 NC	TDV Border #3 24x24 Layin Panel Part #	TDV-NT 24x24 Layin Panel Part #	TDV Border #1 Surface Mount Part #	Damper Part #	Transition 3" Deep Part #
6 x 6	3-way	150	\$122 TDV3B36X6	-	-	\$25 AG956X6	\$35 SRAC6X6-6 SRAC6X6-5
	4-way		\$122 TDV4B36X6	\$202 TDV4NT6X6	\$74 TDV4B16X6		
9 x 9	3-way	300	\$147 TDV3B39X9	-	-	\$38 AG959X9	\$44 SRAC9X9-8 SRAC9X9-7 SRAC9X9-6
	4-way		\$147 TDV4B39X9	\$230 TDV4NT9X9	\$96 TDV4B19X9		
12 x 12	3-way	500	\$190 TDV3B312X12	-	-	\$46 AG9512X12	\$52 SRAC12X12-12 SRAC12X12-10 SRAC12X12-9 SRAC12X12-8
	4-way		\$190 TDV4B312X12	\$276 TDV4NT12X12	\$139 TDV4B112X12		
15 x 15	3-way	700	\$242 TDV3B315X15	-	-	\$84 AG9515X15	\$64 SRAC15X15-14 SRAC15X15-12 SRAC15X15-10
	4-way		\$242 TDV4B315X15	\$333 TDV4NT15X15	-		
18 x 18	4-way	1000	\$302 TDV4B318X18	-	-	\$130 AG9518X18	\$78 SRAC18X18-16 SRAC18X18-14 SRAC18X18-12

TDV-AA - Aluminum Induction Vane Diffuser

Features

- Aluminum construction
- White finish
- Induction vane option
- Four-way pattern

Border #3, 24X24 Module, 4-Way Blow Pattern

Size	Part #	List
6 x 6	TDVAA4B36X6	\$184
9 x 9	TDVAA4B39X9	\$220
12 x 12	TDVAA4B312X12	\$286
15 x 15	TDVAA4B315X15	\$364

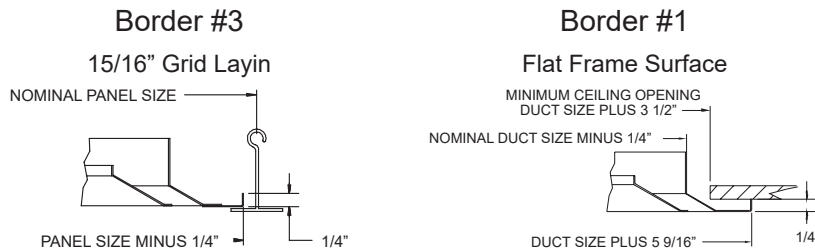
TDCAA - Aluminum Diffuser



Features

- All aluminum construction
- White finish
- Air patterns (1-, 2-, 3-, or 4-way)

Frame Dimensional Data



Size	Air Patterns	CFM @ 30 NC	TDCAA Border #3 24x24 Layin Panel Part #	TDCAA Border #1 Surface Mount Part #	Damper Part #	Transition 3" Deep Part #
6 x 6	1-way	150	\$148 TDCAA1B36X6	-	\$25 AG956X6	\$35 SRAC6X6-6 SRAC6X6-5
	2-way		\$148 TDCAA2B36X6	-		
	Corner		\$148 TDCAA2GB36X6	-		
	3-way		\$148 TDCAA3B36X6	\$84 TDCAA3B16X6		
	4-way		\$148 TDCAA4B36X6	\$84 TDCAA4B16X6		
9 x 9	1-way	300	\$170 TDCAA1B39X9	-	\$38 AG959X9	\$44 SRAC9X9-8 SRAC9X9-7 SRAC9X9-6
	2-way		\$170 TDCAA2B39X9	-		
	Corner		\$170 TDCAA2GB39X9	-		
	3-way		\$170 TDCAA3B39X9	\$107 TDCAA3B19X9		
	4-way		\$170 TDCAA4B39X9	\$107 TDCAA4B19X9		
12 x 12	1-way	600	\$206 TDCAA1B312X12	-	\$46 AG9512X12	\$52 SRAC12X12-12 SRAC12X12-10 SRAC12X12-9 SRAC12X12-8
	2-way		\$206 TDCAA2B312X12	-		
	Corner		\$206 TDCAA2GB312X12	-		
	3-way		\$206 TDCAA3B312X12	\$146 TDCAA3B112X12		
	4-way		\$206 TDCAA4B312X12	\$146 TDCAA4B112X12		
15 x 15	4-way	900	\$261 TDCAA4B315X15	\$182 TDCAA4B115X15	\$84 AG9515X15	\$64 SRAC15X15-14 SRAC15X15-12 SRAC15X15-10
18 x 18	4-way	1250	\$316 TDCAA4B318X18	-	\$130 AG9518X18	\$78 SRAC18X18-16 SRAC18X18-14 SRAC18X18-12

CEILING DIFFUSERS



TMS Diffuser - Layin



Features

- All steel construction
- Layin (Border #3)
- White finish

24x24 Panel

Size	CFM @ 30 NC	Part#	List
6" Dia	250	TMSB36	\$127
8" Dia	380	TMSB38	\$127
10" Dia	525	TMSB310	\$127
12" Dia	750	TMSB312	\$127
14" Dia	900	TMSB314	\$127

12x12 Panel

Size	CFM @ 30 NC	TMS Border #3 12x12 Layin Part #	Plaster Frame 12x12 Part #
12x12 Face, 6" Dia	200	\$81 TMSB312X12-6	\$71 TRM12X12
12x12 Face, 8" Dia	300	\$81 TMSB312X12-8	\$71 TRM12X12

OMNI Diffuser - Layin



Features

- All steel construction
- Layin (Border #3)
- Layin fineline (OMNI-NT)
- White finish

24x24 Panel

Size	CFM @ 30 NC	OMNI Border #3 24X24 Layin Part #	OMNI-NT 24X24 Layin Part #
6" Dia	230	\$131 OMNIB36	\$142 OMNINT6
8" Dia	375	\$131 OMNIB38	\$142 OMNINT8
10" Dia	550	\$131 OMNIB310	\$142 OMNINT10
12" Dia	750	\$131 OMNIB312	\$142 OMNINT12
14" Dia	950	\$131 OMNIB314	\$142 OMNINT14
15" Dia	1100	\$131 OMNIB315	\$142 OMNINT15

Optional Directional Blow Clips



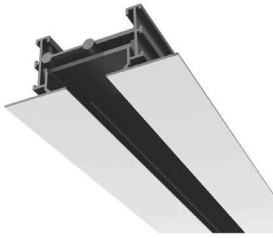
Part # DB
List \$13

Converts 4-way blow to 1, 2, or 3-way

12x12 Panel

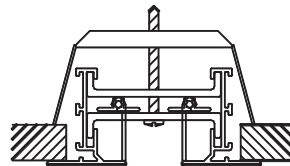
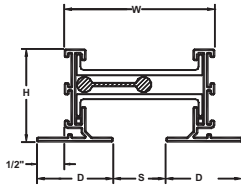
Size	CFM @ 30 NC	OMNI Border #3 12x12 Layin Part #	Plaster Frame 12x12 Part #
12x12 Face, 6" Dia	200	\$83 OMNIB312X12-6	\$67 TRM12X12
12x12 Face, 8" Dia	250	\$83 OMNIB312X12-8	\$91 TRM12X12

FL - Flowbar Architectural Linear Border 77



Features

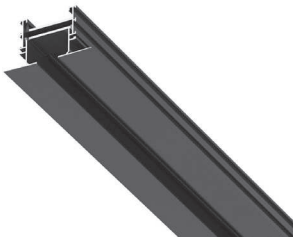
- Border 77 concealed mounting
- HT High Throw pattern controller
- SXX end borders
- Concealed mounting bracket
- White finish exposed flanges



Size	Slot Width	Part #	List
48" x 1 slot	1"	FL107748	\$388
72" x 1 slot	1"	FL107772	\$582

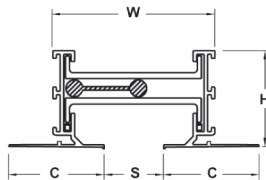
For ordering - plenum width to be 3 3/4" hemmed end

FL - Flowbar Architectural Linear Border 22



Features

- Border 22 mud in flange
- HT High Throw pattern controller
- ECXX end caps
- H3/H3 ceiling clips for 5/8" drywall
- Black finish



Size	Slot Width	Part #	List
48" x 1 slot	1"	FL102248	\$371
72" x 1 slot	1"	FL102272	\$557

Plenums for Border 22 flowbar must be provided by Titus

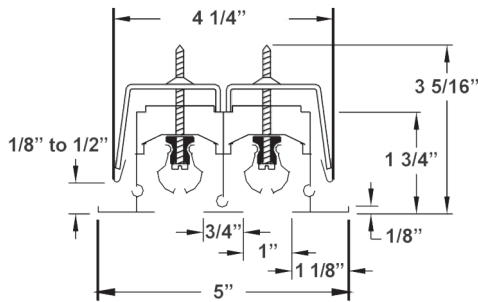
ML - Linear Slot Diffuser



Features

- White border, black blades
- Adjustable blades
- 1" wide slot opening

ML39 Cross Section Border 2A & 1B



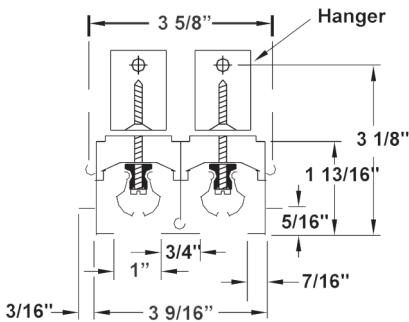
Surface Drywall Concealed Mounting, Border 2A with X-X End Caps

Size	CFM @ 30 NC	Part #	List
24" x 2 slot	100	ML392A24X2	\$119
48" x 2 slot	175	ML392A48X2	\$238
72" x 2 slot	290	ML392A72X2	\$357

Layin T-Bar 15/16" Grid, Border 1B

Size	CFM @ 30 NC	Part #	List
24" x 2 slot	100	MLT391B24X2	\$104
48" x 2 slot	175	MLT391B48X2	\$208

ML39 Cross Section Border NT



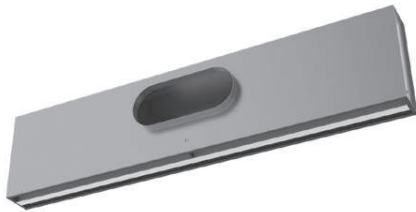
Layin Finline 9/16" Grid, Border NT

Size	CFM @ 30 NC	Part #	List
24" x 2 slot	100	ML39NT24X2	\$104
48" x 2 slot	175	ML39NT48X2	\$208

Plenum Ordering Information for ML Linears

Linear Ordered Length	Border 2A	Border 1B	Border NT
24"	Length = 23 1/8 Width = 4 1/4	Length = 21 3/4 Width = 3 5/8	Length = 22 3/4 Width = 3 5/8
48"	Length = 47 1/8 Width = 4 1/4	Length = 45 3/4 Width = 3 5/8	Length = 46 3/4 Width = 3 5/8

TBDI - Plenum Slot Diffuser



Features

- Insulated plenum, low profile 8" high
- Layin T-Bar ceiling installations
- White insert factory provided T-Bar, black exposed face
- Oval inlet connection
- 1" slot width

Size	CFM @ 30 NC	Part #	List
48 x 2 slot, 8" Oval	250	TBDI8048X2X8	\$283
48 x 2 slot, 10" Oval	280	TBDI8048X2X10	\$283
24 x 2 slot, 6" Oval	130	TBDI8024X2X6	\$203
24 x 2 slot, 8" Oval	140	TBDI8024X2X8	\$203

Optional Plaster Frame for PFTBD Plenum Slot Diffuser

Ceiling Rough Opening		
# of Slots	Width	Length
2	4 1/2"	Length + 1/2"

Size	Part #	List
24 x 2 slot, 1" slot width	PFTBD24X2X1	\$44
48 x 2 slot, 1" slot width	PFTBD48X2X1	\$51

Plenums

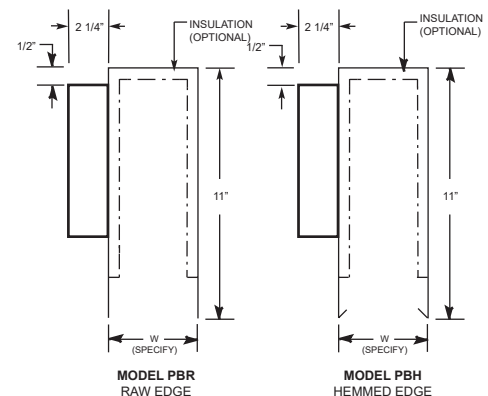
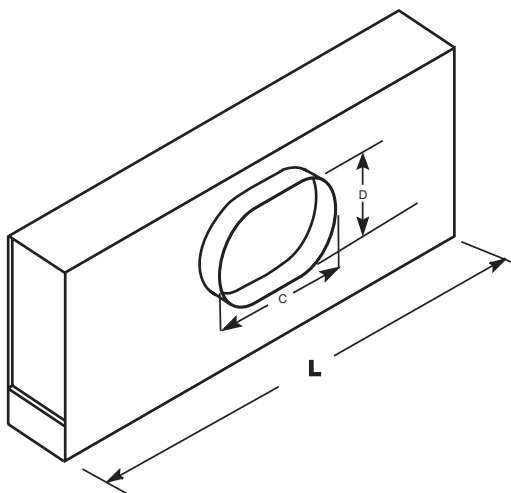


Standard Construction Features

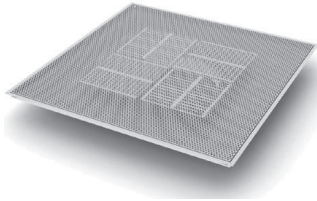
- 24 gauge galvanized steel
- 1/2" duct liner when lined
- End caps non-lined
- Hemmed edge (Concealed Mount), raw edge (T-Bar Mount)
- Oval inlet connection

Inlet Information

Oval	D	C
6"	5 1/4"	6 1/4"
8"	5 1/4"	9 3/8"
10"	5 1/4"	12 1/2"
12"	7 7/8"	14 1/8"



PAS - Perforated Supply Diffuser - Layin

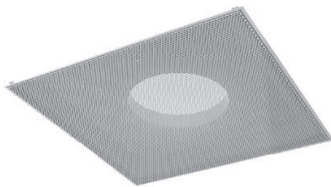


Features

- All steel construction
- White finish
- Layin (Border #3)
- Modular deflectors for multiple air patterns

Size	CFM @ 30 NC	Part#	List
6" Dia.	140	PASB36	\$111
8" Dia.	220	PASB38	\$111
10" Dia.	320	PASB310	\$111
12" Dia.	420	PASB312	\$111
14" Dia.	520	PASB314	\$111
16" Dia.	600	PASB316	\$157

PAR - Perforated Return/Exhaust

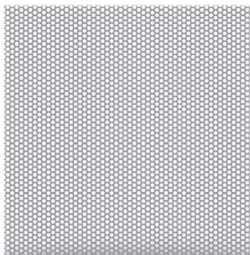


Features

- All steel construction
- Layin (Border #3)
- White finish

Size	CFM @ 30 NC	Part #	List
6" Dia.	200	PARB36	\$111
8" Dia.	330	PARB38	\$111
10" Dia.	480	PARB310	\$111
12" Dia.	630	PARB312	\$111
14" Dia.	750	PARB314	\$111
16" Dia.	870	PARB316	\$148
22 x 10	1600	PARB322X10	\$107
22 x 22	2000	PARB322X22	\$111
46 X 22	4200	PARB346X22	\$182

PXP - Perforated Return



Features

- Layin (Border #3)
- White finish
- Used for non-ducted applications

Size	Part #	List
24 x 12	PXPB324X12	\$37
24 x 24	PXPB324X24	\$54

TMR - Round Diffuser



Features

- Steel construction
- Adjustable horizontal and vertical discharge pattern
- White finish

Size	CFM @ 30 NC	Part #	List
6" Dia.	200	TMR6	\$219
8" Dia.	300	TMR8	\$229
10" Dia.	450	TMR10	\$252
12" Dia.	600	TMR12	\$285
14" Dia.	850	TMR14	\$326

SRAC - Square to Round Transition

Features

- 26 gauge galvanized steel
- 3" box depth
- Closed corners



Size	Part#	List	Size	Part#	List
6 X 6 - 5	SRAC6x6-5	\$35	14 X 14 - 10	SRAC14x14-10	\$62
6 X 6 - 6	SRAC6x6-6	\$35	14 X 14 - 12	SRAC14x14-12	\$62
8 X 8 - 6	SRAC8x8-6	\$39	15 X 15 - 10	SRAC15x15-10	\$64
8 X 8 - 8	SRAC8x8-8	\$40	15 X 15 - 12	SRAC15x15-12	\$64
9 X 9 - 6	SRAC9x9-6	\$39	15 X 15 - 14	SRAC15x15-14	\$64
9 X 9 - 7	SRAC9x9-7	\$44	16 X 16 - 12	SRAC16x16-12	\$68
9 X 9 - 8	SRAC9x9-8	\$44	16 X 16 - 14	SRAC16x16-14	\$68
9 X 9 - 9	SRAC9x9-9	\$44	18 X 18 - 12	SRAC18x18-12	\$77
10 X 10 - 6	SRAC10x10-6	\$47	18 X 18 - 14	SRAC18x18-14	\$77
10 X 10 - 8	SRAC10x10-8	\$47	18 X 18 - 16	SRAC18x18-16	\$78
10 X 10 - 9	SRAC10x10-9	\$47	22 X 22 - 6	SRAC22x22- 6	\$97
10 X 10 - 10	SRAC10x10-10	\$48	22 X 22 - 8	SRAC22x22- 8	\$98
12 X 12 - 6	SRAC12x12-6	\$51	22 X 22 - 10	SRAC22x22-10	\$98
12 X 12 - 8	SRAC12x12-8	\$51	22 X 22 - 12	SRAC22x22-12	\$98
12 X 12 - 9	SRAC12x12-9	\$51	22 X 22 - 14	SRAC22x22-14	\$99
12 X 12 - 10	SRAC12x12-10	\$51	22 X 22 - 16	SRAC22x22-16	\$99
12 X 12 - 12	SRAC12x12-12	\$52	22 X 22 - 18	SRAC22x22-18	\$100

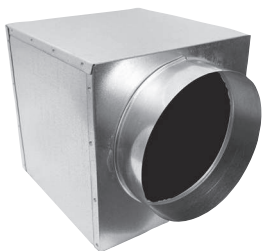
Sizes not listed can be custom fabricated in our shop

Custom Fabrication Options Available

- Aluminum or stainless material
- Box depths other than 3"

Custom Diffuser Boxes

SIB - Side Inlet



Features

- 26 gauge galvanized steel
- Closed corners

Options Available

- Lined Interior
- Flange at Base

DCBTR - Side Diffuser Boot



Features

- 26 gauge galvanized steel
- Closed corners

Options Available

- Lined Interior



TRM - Plaster Frame

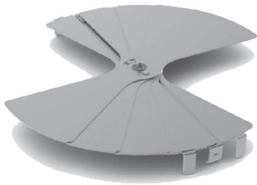


Features

- Aluminum construction
- Permits Layin diffusers to be installed in hard ceiling
- White finish
- Ceiling opening is $\frac{3}{8}$ " greater than listed size

Size	Part #	List
12 x 12	TRM12X12	\$71
24 x 24	TRM24X24	\$97
48 x 24	TRM48X24	\$165

D100 Round Damper



Features

- Used with Models PAS, PAR, TMS, & OMNI

Size	Part #	List
6" Dia	D1006	\$40
8" Dia	D1008	\$45
10" Dia	D10010	\$45
12" Dia	D10012	\$49
14" Dia	D10014	\$76

AG35 Damper



Features

- Attaches to the back of Titus Grilles
- Opposed blade damper operated by flat-head screwdriver through face
- Mill finish

Size	Part #	List
6 x 6	AG356X6	\$27
8 x 8	AG358X8	\$36
10 x 10	AG3510X10	\$40
12 x 12	AG3512X12	\$49

Titus Spray Paint

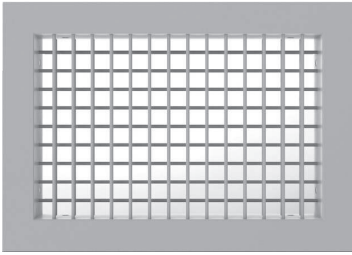


Features

- Touch up paint for Titus #26 white finish

Part #	List
PT18	\$56

300RS - Steel Supply Register



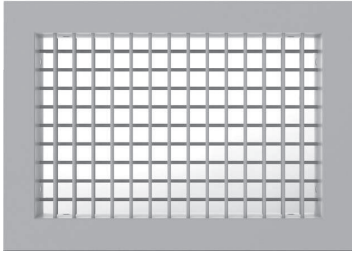
Features

- Steel construction
- Vertical front with horizontal rear deflection vanes
- White finish
- Opposed blade damper included

Size	CFM @ 30 NC	Part #	List
8 x 4	90	300RSOBD8X4	\$77
10 x 4	105	300RSOBD10X4	\$85
12 x 4	120	300RSOBD12X4	\$92
14 x 4	150	300RSOBD14X4	\$96
24 x 4	350	300RSOBD24X4	\$137
6 x 6	160	300RSOBD6X6	\$83
8 x 6	200	300RSOBD8X6	\$87
10 x 6	270	300RSOBD10X6	\$94
12 x 6	330	300RSOBD12X6	\$98
14 x 6	370	300RSOBD14X6	\$109
16 x 6	400	300RSOBD16X6	\$119
18 x 6	450	300RSOBD18X6	\$130
20 x 6	500	300RSOBD20X6	\$139
24 x 6	580	300RSOBD24X6	\$154
30 x 6	680	300RSOBD30X6	\$196
8 x 8	300	300RSOBD8X8	\$94
10 x 8	350	300RSOBD10X8	\$96
12 x 8	400	300RSOBD12X8	\$107
14 x 8	460	300RSOBD14X8	\$119
16 x 8	520	300RSOBD16X8	\$130
18 x 8	580	300RSOBD18X8	\$141
20 x 8	650	300RSOBD20X8	\$149
24 x 8	780	300RSOBD24X8	\$169

Size	CFM @ 30 NC	Part #	List
30 x 8	950	300RSOBD30X8	\$218
36 x 8	1090	300RSOBD36X8	\$269
10 x 10	430	300RSOBD10X10	\$105
12 x 10	500	300RSOBD12X10	\$115
14 x 10	570	300RSOBD14X10	\$128
16 x 10	630	300RSOBD16X10	\$139
18 x 10	700	300RSOBD18X10	\$156
20 x 10	820	300RSOBD20X10	\$166
24 x 10	950	300RSOBD24X10	\$188
12 x 12	580	300RSOBD12X12	\$126
14 x 12	660	300RSOBD14X12	\$139
16 x 12	780	300RSOBD16X12	\$156
18 x 12	900	300RSOBD18X12	\$168
20 x 12	1000	300RSOBD20X12	\$181
24 x 12	1150	300RSOBD24X12	\$205
14 x 14	780	300RSOBD14X14	\$154
18 x 14	980	300RSOBD18X14	\$190
24 x 14	1320	300RSOBD24X14	\$230
16 x 16	1050	300RSOBD16X16	\$190
24 x 16	1500	300RSOBD24X16	\$260
18 x 18	1290	300RSOBD18X18	\$228
24 x 24	2100	300RSOBD24X24	\$373

300FS - Aluminum Supply Register



Features

- Aluminum construction
- Vertical front with horizontal rear deflection vanes
- White finish
- Opposed blade damper included

Size	CFM @ 30 NC	Part #	List
6 x 6	160	300FSOBD6X6	\$92
8 x 6	200	300FSOBD8X6	\$96
10 x 6	270	300FSOBD10X6	\$106
12 x 6	330	300FSOBD12X6	\$110
14 x 6	370	300FSOBD14X6	\$120
8 x 8	300	300FSOBD8X8	\$106
10 x 8	350	300FSOBD10X8	\$108

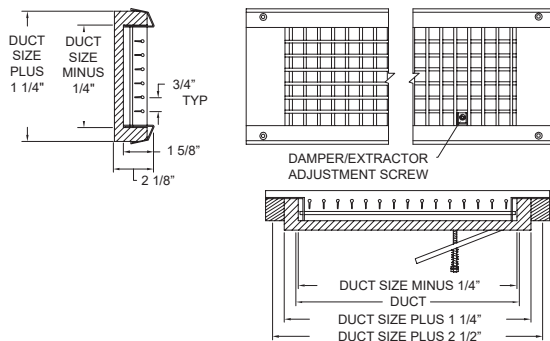
Size	CFM @ 30 NC	Part #	List
12 x 8	400	300FSOBD12X8	\$118
14 x 8	460	300FSOBD14X8	\$133
10 x 10	430	300FSOBD10X10	\$116
12 x 10	500	300FSOBD12X10	\$129
14 x 10	570	300FSOBD14X10	\$141
12 x 12	580	300FSOBD12X12	\$139

US300FS - Spiral Duct Register



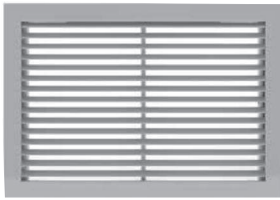
Features

- Double deflection, vertical front/horizontal rear blades
- Fits multiple duct diameters
- Built-in damper scoop
- Mill finish



Size	Spiral Dia. Range	CFM @ 30 NC	Part #	List
18 x 3	8" - 36"	230	US300FS18X3	\$262
12 x 4	10" - 36"	220	US300FS12X4	\$243
18 x 4	10" - 36"	320	US300FS18X4	\$272
12 x 6	12" - 36"	320	US300FS12X6	\$260
18 x 6	12" - 36"	450	US300FS18X6	\$293
24 x 6	12" - 36"	650	US300FS24X6	\$308
18 x 8	20" - 36"	650	US300FS18X8	\$312
24 x 8	20" - 36"	850	US300FS24X8	\$331

350RL - Steel Return Grille Layin

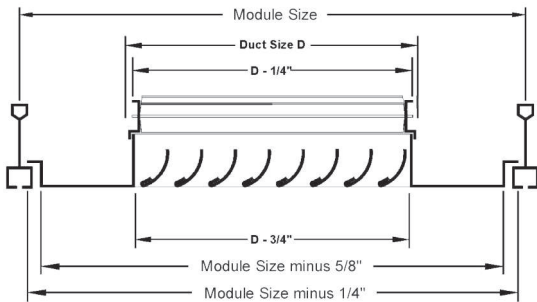


Features

- All steel construction
- Horizontal fixed blades set at 35°
- Layin (Border #3), 24x24 module
- White finish

Size	CFM @ 30 NC	Part #	List
6 x 6	125	350RLB36X6	\$130
8 x 8	250	350RLB38X8	\$145
10 x 10	350	350RLB310X10	\$151
12 x 12	500	350RLB312X12	\$156
14 x 14	750	350RLB314x14	\$169
16 x 16	1000	350RLB316X16	\$183
18 x 18	1300	350RLB318X18	\$201
22 x 22	1550	350RL22X22	\$131

350RLNT - Steel Return/Exhaust Grille Finline

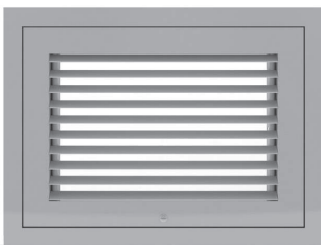


Features

- All steel construction
- Horizontal fixed blades set at 35°
- Border to fit narrow fineline or bolt slot grid, 24x24 module
- White finish

Size	CFM @ 30 NC	Part #	List
22 x 22	1550	350RLNT22X22	\$139

350RLF - Steel Filter Grille



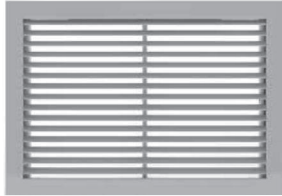
Features

- All steel construction
- 1" filter frame
- White finish
- Filter by others

Size	CFM @ 30 NC	Part #	List
12 x 12	500	350RLF112X12	\$87
18 x 18	1300	350RLF118X18	\$181
20 x 20*	1400	350RLF120X20	\$218
24 x 24	1700	350RLF124X24	\$277

* 20X20 can be used for both Lay-in and Surface mount applications

350RL - Steel Return/Exhaust



Features

- Steel construction
- Horizontal fixed blades set at 35°
- Optional damper with Model 350RLOBD
- White finish

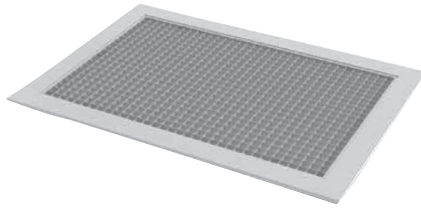
Size	CFM @ 30 NC	350RL No Damper Part #	350RLOBD with Damper Part #
12 x 4	150	\$41 350RL12X4	-
6 x 6	125	\$26 350RL6X6	\$56 350RLOBD6X6
8 x 6	175	\$32 350RL8X6	\$66 350RLOBD8X6
10 x 6	200	\$41 350RL10X6	\$77 350RLOBD10X6
12 x 6	250	\$41 350RL12X6	\$81 350RLOBD12X6
14 x 6	275	\$47 350RL14X6	\$90 350RLOBD14X6
16 x 6	340	\$47 350RL16X6	\$94 350RLOBD16X6
18 x 6	380	\$53 350RL18X6	\$104 350RLOBD18X6
20 x 6	425	\$53 350RL20X6	-
24 x 6	520	\$66 350RL24X6	-
30 x 6	625	\$79 350RL30X6	-
8 x 8	250	\$41 350RL8X8	\$77 350RLOBD8X8
10 x 8	250	\$41 350RL10X8	\$79 350RLOBD10X8
12 x 8	300	\$47 350RL12X8	\$88 350RLOBD12X8
14 x 8	375	\$47 350RL14X8	\$94 350RLOBD14X8
16 x 8	450	\$53 350RL16X8	\$104 350RLOBD16X8
18 x 8	450	\$53 350RL18X8	-
20 x 8	650	\$58 350RL20X8	-

Size	CFM @ 30 NC	350RL No Damper Part #	350RLOBD with Damper Part #
24 x 8	700	\$66 350RL24X8	\$132 350RLOBD24X8
30 x 8	900	\$87 350RL30X8	-
10 x 10	350	\$47 350RL10X10	\$87 350RLOBD10X10
12 x 10	400	\$47 350RL12X10	\$90 350RLOBD12X10
14 x 10	475	\$53 350RL14X10	\$102 350RLOBD14X10
16 x 10	550	\$58 350RL16X10	\$111 350RLOBD16X10
18 x 10	570	\$66 350RL18X10	\$124 350RLOBD18X10
20 x 10	750	\$66 350RL20X10	-
22 x 10*	750	\$66 350RL22X10	-
24 x 10	800	\$72 350RL24X10	-
30 x 10	1000	\$98 350RL30X10	-
12 x 12	500	\$53 350RL12X12	\$100 350RLOBD12X12
14 x 12	650	\$58 350RL14X12	\$111 350RLOBD14X12
16 x 12	700	\$66 350RL16X12	-
18 x 12	750	\$66 350RL18X12	\$130 350RLOBD18X12
20 x 12	800	\$72 350RL20X12	\$139 350RLOBD20X12
24 x 12	900	\$79 350RL24X12	-
30 x 12	950	\$104 350RL30X12	-

Size	CFM @ 30 NC	350RL No Damper Part #	350RLOBD with Damper Part #
14 x 14	750	\$66 350RL14X14	\$122 350RLOBD14X14
20 x 14	1050	\$85 350RL20X14	-
24 x 14	1150	\$92 350RL24X14	-
16 x 16	1000	\$79 350RL16X16	\$145 350RLOBD16X16
20 x 16	1200	\$92 350RL20X16	-
24 x 16	300	\$104 350RL24X16	-
18 x 18	1300	\$98 350RL18X18	\$169 350RLOBD18X18
24 x 18	1400	\$119 350RL24X18	-
20 x 20	1300	\$119 350RL20X20	-
24 x 20	1400	\$130 350RL24X20	-
22 x 22*	1550	\$139 350RL22X22	-
24 x 24	1700	\$166 350RL24X24	-
30 x 24	2000	\$211 350RL30X24	-
36 x 24	2500	\$254 350RL36X24	-
30 x 30	3000	\$263 350RL30X30	-

These sizes (*) have no screw holes and are intended for a Lay-in application

50F - Eggcrate



Features

- All aluminum construction
- ½ x ½ x ½ aluminum grid cells
- Optional steel damper with Model 50F0BD
- White finish

Surface Mount

Size	CFM @ 30 NC	50F Part #	50FOBD Part #
6 x 6	150	\$37 50F6X6	\$66 50FOBD6X6
8 x 8	275	\$48 50F8X8	\$83 50FOBD8X8
10 x 10	450	\$55 50F10X10	\$94 50FOBD10X10
12 x 12	750	\$63 50F12X12	\$109 50FOBD12X12
14 x 14	900	\$81 50F14X14	\$136 50FOBD14X14
24 x 24	2500	\$166 50F24X24	-

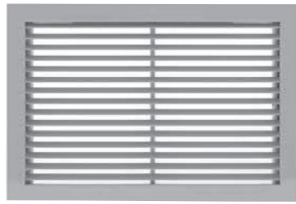
Layin Mount 1⁵/₁₆" Grid (24x24 Module)

Size	CFM @ 30 NC	Part #	List
6 x 6	150	50FB36X6	\$184
8 x 8	275	50FB38X8	\$195
10 x 10	450	50FB310X10	\$203
12 x 12	750	50FB312X12	\$210
14 x 14	900	50FB314X14	\$229
22 x 10	1000	50F22X10	\$85
22 x 22	2400	50F22X22	\$144

Fineline Layin (24x24 Module)

Size	CFM @ 30 NC	Part #	List
22 x 22	2400	50FNT22X22	\$306

350FL - Aluminum Return/Exhaust



Features

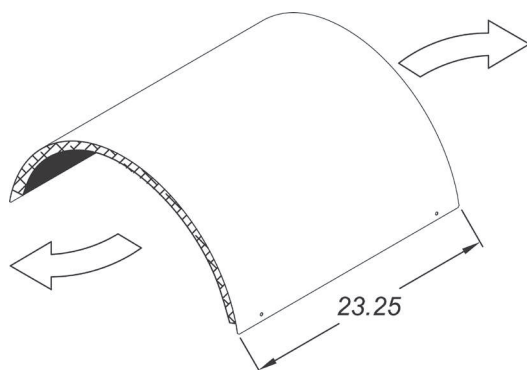
- Aluminum construction
- Horizontal fixed blades set at 35°
- Optional steel damper with Model 350FLOBD
- White finish

Size	CFM @ 30 NC	350FL No Damper		350FLOBD With Damper	
		Part #	List	Part#	List
6 x 6	125	350FL6X6	\$39	350FLOBD6X6	\$71
8 x 6	175	350FL8X6	\$39	350FLOBD8X6	\$75
10 x 6	200	350FL10X6	\$45	350FLOBD10X6	\$82
12 x 6	250	350FL12X6	\$45	350FLOBD12X6	\$86
8 x 8	250	350FL8X8	\$45	350FLOBD8X8	\$82
10 x 8	250	350FL10X8	\$45	350FLOBD10X8	\$84
12 x 8	300	350FL12X8	\$55	350FLOBD12X8	\$98
14 x 8	375	350FL14X8	\$55	350FLOBD14X8	\$104
10 x 10	350	350FL10X10	\$55	350FLOBD10X10	\$96

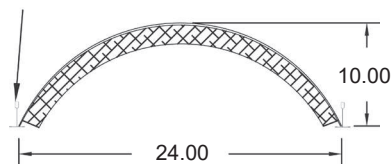
Size	CFM @ 30 NC	350FL No Damper		350FLOBD With Damper	
		Part #	List	Part #	List
12 x 10	400	350FL12X10	\$55	350FLOBD12X10	\$100
22 x 10*	750	350FL22X10	\$75	-	-
12 x 12	500	350FL12X12	\$61	350FLOBD12X12	\$110
14 x 14	750	350FL14X14	\$75	-	-
16 x 16	1000	350FL16X16	\$90	-	-
20 x 20	1400	350FL20X20	\$135	-	-
22x22*	1550	350FL22X22	\$161	-	-
24 x 24	1700	350FL24X24	\$190	-	-

* These sizes(*) have no screw holes and are intended for a Layin application

CLS - Light/Sound Shield



15/16" T-BAR (BY OTHERS)

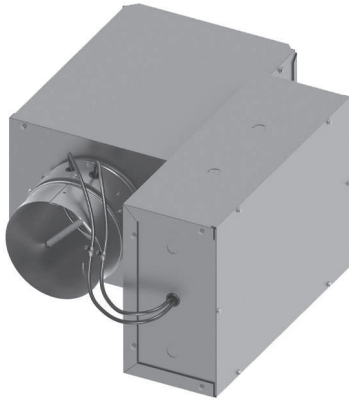


Features

- 22 gauge steel
- 1/2" acoustical liner
- Factory curved

Part #	List
CLS24	\$120

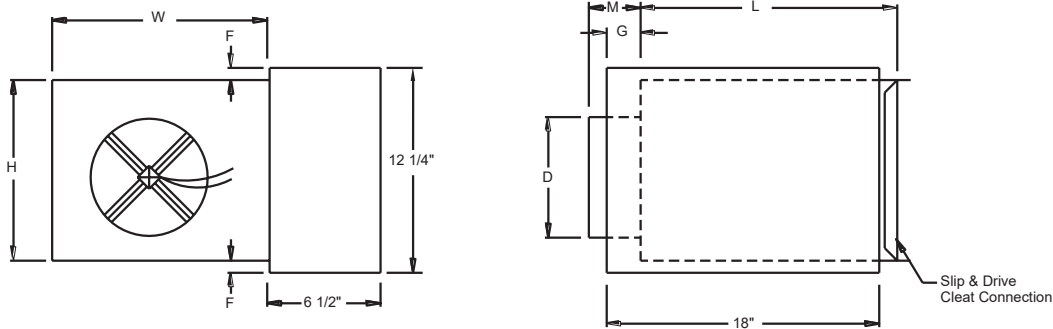
DESV - VAV Terminal Unit



Features

- Sensor: Multi-point averaging flow sensor
- Liner: ½" foil faced ecoshield liner
- Casing: Casing is 22 gauge galvanized steel, right hand
- Controls: Controls by others for field mounting
- Enclosure: Control enclosure box included
- Access Panel: Bottom access panel included

Size	CFM Range	DESV Part #	1 Row Coil Part #	2 Row Coil Part #
6"	200 – 500	\$502 DESV6	\$257 1R06	\$400 2R06
8"	350 – 900	\$575 DESV8	\$368 1R08	\$515 2R08
10"	600 – 1400	\$599 DESV10	–	\$689 2R10
12"	900 – 2000	\$613 DESV12	–	\$853 2R12
14"	1200 – 3000	\$742 DESV14	–	\$1219 2R14
16"	1600 – 4000	\$778 DESV16	–	\$1356 2R16



Right hand unit shown. All dimensions are in inches.

Dimensional Data

DESV Size	VAV BOX						HW COIL			
	Width W	Height H	Length L	Inlet Dia D	Inlet Depth M	F	Width	Height	Water Conn.	
6"	12	8	15 ½	5 ⅞	3 ⅜	2 ⅞	12	8	½	⅞
8"	12	10	15 ½	7 ⅞	3 ⅜	1 ⅞	12	10	½	⅞
10"	14	12 ½	15 ½	9 ⅞	3 ⅜	–	14	12 ½	⅞	⅞
12"	16	15	15 ½	11 ⅞	3 ⅜	–	16	15	⅞	⅞
14"	20	17 ½	15 ½	13 ⅞	3 ⅜	–	20	17 ½	⅞	⅞
16"	24	18	15 ½	15 ⅞	3 ⅜	–	24	18	⅞	⅞

PSC Replacement Motor



HP, Voltage	Part #	List
1/3 HP, 277V/1PH	VAV33HP2771PH	\$714
1/4 HP, 277V/1PH	VAV25HP2771PH	\$610
1/6 HP, 277V/1PH	VAV16HP2771PH	\$746
3/4 HP, 277V/1PH	VAV75HP2771PH	\$844

Aerocross



Inlet Size	Part #	List
6" Dia.	SENSOR6	\$309
8" Dia.	SENSOR8	\$319
10" Dia.	SENSOR10	\$326
12" Dia.	SENSOR12	\$338
14" Dia.	SENSOR14	\$348

VAV Transformer



Voltage	Part #	List
120 V to 24 V	120V-24V	\$140
277 V to 24 V	277V-24V	\$140

Fan Motor Capacitor



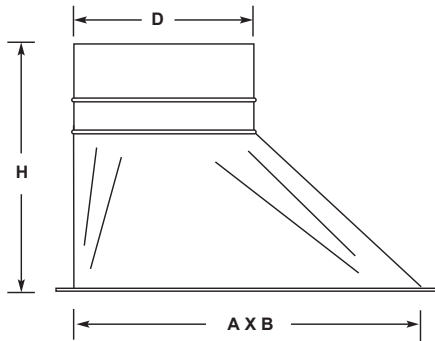
Rated for HP	Part #	List
1/4 HP Motor	CAPACITOR25	\$47
1/3 & 1/2 HP Motor	CAPACITOR3350	\$55
1/10 & 1/6 HP Motor	CAPACITOR11016	\$41
3/4 HP Motor	CAPACITOR75	\$68

VAV Speed Controller



Voltage	Part #	List
277 V	SCVAV5A	\$309

High Efficiency Takeoff

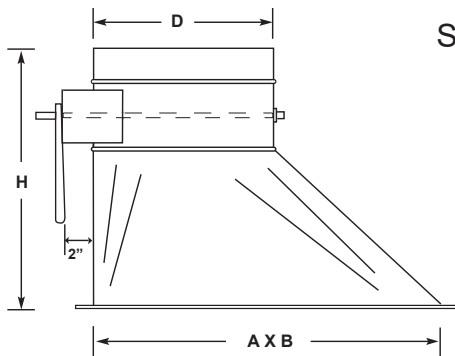


HET Construction

- 26 gauge galvanized steel
- 1/8" thick double stick gasket
- Model HET without damper



SHETD shown above



SHETD Construction

- 26 gauge galvanized steel
- 1/8" thick double stick gasket
- 3/8" square damper shaft
- 2" heavy standoff bracket with locking handle
- Nylon damper bushing

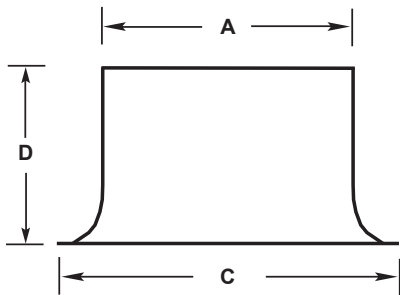
Dia.	Dimensional Data		HET No Damper Part #	SHETD Damper & Standoff Part #
	A X B	H		
4"	10 x 5	11.5	\$37 HET4	\$55 SHETD4
5"	10 x 5	11.5	\$37 HET5	\$52 SHETD5
6"	12 x 6	11.5	\$40 HET6	\$52 SHETD6
7"	12 x 6	11.5	\$47 HET7	\$59 SHETD7
8"	12 x 6	11.5	\$42 HET8	\$60 SHETD8
9"	15 x 6	12.5	\$52 HET9	\$76 SHETD9
10"	16 x 6.75	12.5	\$53 HET10	\$78 SHETD10
12"	18 x 8.5	12.5	\$66 HET12	\$90 SHETD12
14"	20 x 9.5	12.5	\$81 HET14	\$109 SHETD14
16"	24 x 12	16	\$131 HET16	\$141 SHETD16

Also available in stainless steel or aluminum material

TAKEOFF COLLARS

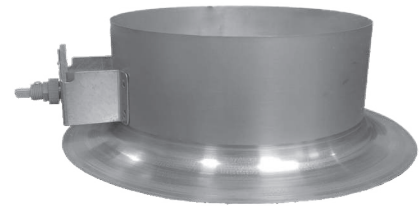


Bellmouth Fitting

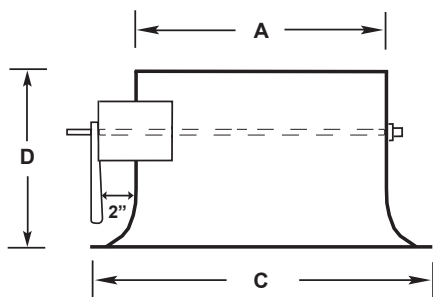


BL Construction

- 24 gauge galvanized steel
- 3/4" radius bell



SBLD shown above



SBLD Construction

- 2" heavy standoff bracket with locking hand quadrant
- Nylon damper bushing
- 3/4" radius bell
- 24 gauge galvanized steel

Dia.	Dimensional Data			BL No Damper Part #	SBLD Damper & Standoff Part #
	A	D	C		
4"	3 7/8	5 1/4	6 1/4	\$41 BL4	\$68 SBLD4
5"	4 7/8	5 1/4	8 1/4	\$43 BL5	\$68 SBLD5
6"	5 7/8	5 1/4	9 1/4	\$45 BL6	\$67 SBLD6
7"	6 7/8	5 1/4	11	\$47 BL7	\$73 SBLD7
8"	7 7/8	5 1/4	12	\$49 BL8	\$74 SBLD8
9"	8 7/8	5 1/2	13	\$53 BL9	\$82 SBLD9
10"	9 7/8	5 1/2	14	\$57 BL10	\$85 SBLD10
12"	11 7/8	6	16	\$63 BL12	\$95 SBLD12
14"	13 7/8	6 1/4	18	\$86 BL14	\$117 SBLD14
16"	15 7/8	6 1/4	20	\$104 BL16	\$144 SBLD16
18"	17 7/8	6 1/4	22	\$122 BL18	\$212 SBLD18

CATT & CATD

Features

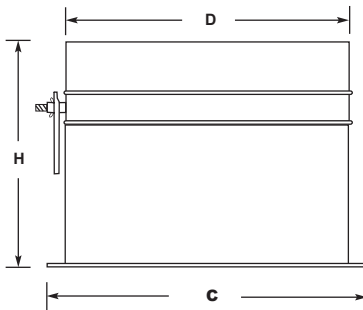
- 26 gauge galvanized steel
- Stick-on neoprene gasket
- Small end connection



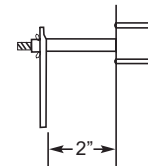
Model CATD (with damper)



Model CATT



2" Standoff Option - Model SCATD



Standoff Detail

Dia.	Dimensional Data			CATT No Damper Part #	CATD with Damper Part #	SCATD Damper & Standoff Part #
	CATT H	CATD H	O.D. C			
4"	2	3.5	7	\$23 CATT4	\$34 CATD4	\$41 SCATD4
5"	2	6	8	\$23 CATT5	\$35 CATD5	\$42 SCATD5
6"	2	6	9	\$24 CATT6	\$36 CATD6	\$43 SCATD6
7"	2	6	10	\$26 CATT7	\$39 CATD7	\$46 SCATD7
8"	2	6	11	\$27 CATT8	\$42 CATD8	\$49 SCATD8
9"	2	6	12	\$28 CATT9	\$44 CATD9	\$51 SCATD9
10"	2	6	13	\$30 CATT10	\$48 CATD10	\$55 SCATD10
12"	2	6	15	\$33 CATT12	\$55 CATD12	\$62 SCATD12
14"	2	6	17	\$37 CATT14	\$61 CATD14	\$68 SCATD14
16"	2	6	19	\$50 CATT16	\$88 CATD16	\$95 SCATD16
18"	2	6	21	\$71 CATT18	\$138 CATD18	\$145 SCATD18

FLEXIBLE DUCT



036 ATCO Flexible Duct

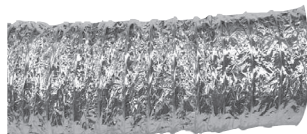


Features

- Fiberglass scrim reinforced, metallized polyester jacket
- Double laminated polyester core
- UL181 listed Class I air connector
- R-value of 6"

Size	Part #	List
4" Dia.	036FLEX4	\$100
5" Dia.	036FLEX5	\$117
6" Dia.	036FLEX6	\$131
7" Dia.	036FLEX7	\$144
8" Dia.	036FLEX8	\$156
9" Dia.	036FLEX9	\$177
10" Dia.	036FLEX10	\$196
12" Dia.	036FLEX12	\$244
14" Dia.	036FLEX14	\$295
16" Dia.	036FLEX16	\$339

Non-Insulated Flex

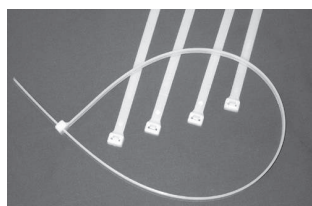


Features

- Triple lamination of metallized polyester and aluminum foil
- Non-insulated
- UL181 listed Class I air connector

Size	Part #	List
3" Dia.	050FLEX3	\$79
4" Dia.	050FLEX4	\$83
5" Dia.	050FLEX5	\$100
6" Dia.	050FLEX6	\$111
7" Dia.	050FLEX7	\$128
8" Dia.	050FLEX8	\$145
9" Dia.	050FLEX9	\$166
10" Dia.	050FLEX10	\$183
12" Dia.	050FLEX12	\$228
14" Dia.	050FLEX14	\$277
16" Dia.	050FLEX16	\$333
18" Dia.	050FLEX18	\$388

Duct Straps



Features

- Clamps are self-locking for use with flexible duct
- Heavy (175 lbs.) tensile strength
- For larger diameters, join two clamps together

Diameters	Part #	List
UP to 10"	DCV10	\$0.75
UP to 12"	DCV13	\$1.18

Sold by bag, 50 pieces per bag

Stainless Steel Clamps



Features

- Stainless steel worm gear band
- Hex head bolt

Diameters	Part #	List
5" to 8"	SS8	\$9
6" to 12"	SS12	\$12

SNAPLOCK PIPE & FITTINGS



Galvanized Snaplock Pipe & Fittings - 26 Gauge



Size	5 Ft Pipe Part #	2 Ft Pipe Part #	90° Elbow Part #	45° Elbow Part #	Tee Part #	End Cap Large End Part #	Stick On Saddle Tap With Damper Part #
4" Dia.	\$29 2654	\$19 2624	\$17 26904	\$24 26454	\$41 26T4	\$22 26RC4	\$49 RATD4
5" Dia.	\$32 2655	\$20 2625	\$20 26905	\$24 26455	\$42 26T5	\$23 26RC5	\$50 RATD5
6" Dia.	\$36 2656	\$22 2626	\$18 26906	\$27 26456	\$47 26T6	\$25 26RC6	\$51 RATD6
7" Dia.	\$41 2657	\$24 2627	\$22 26907	\$29 26457	\$50 26T7	\$27 26RC7	\$52 RATD7
8" Dia.	\$46 2658	\$26 2628	\$22 26908	\$30 26458	\$55 26T8	\$29 26RC8	\$58 RATD8
9" Dia.	\$52 2659	\$28 2629	\$24 26909	\$32 26459	\$58 26T9	\$31 26RC9	\$60 RATD9
10" Dia.	\$54 26510	\$30 26210	\$30 269010	\$34 264510	\$62 26T10	\$33 26RC10	\$66 RATD10
12" Dia.	\$69 26512	\$37 26212	\$34 269012	\$39 264512	\$64 26T12	\$36 26RC12	\$75 RATD12
14" Dia.	\$86 26514	\$54 26214	\$45 269014	\$50 264514	\$67 26T14	\$41 26RC14	\$90 RATD14
16" Dia.	\$126 26516	\$87 26216	\$60 269016	\$75 264516	\$72 26T16	\$47 26RC16	-

Aluminum Snaplock Pipe and Elbows

Size	4 ft Pipe Part #	90° Elbow Part #
4" Dia.	\$77 A2644	\$47 A26904
6" Dia.	\$90 A2646	\$53 A26906
8" Dia.	\$115 A2648	\$62 A26908
10" Dia.	\$136 A26410	\$76 A269010
12" Dia.	\$160 A26412	\$84 A269012

Stainless Steel Snaplock Pipe and Elbows

Size	4 ft Pipe Part #	90° Elbow Part #
4" Dia.	\$111 SS2644	\$71 SS26904
6" Dia.	\$140 SS2646	\$79 SS26906
8" Dia.	\$174 SS2648	\$100 SS26908
10" Dia.	\$203 SS26410	\$124 SS269010
12" Dia.	\$247 SS26412	\$148 SS269012

Custom fabricated Aluminum and Stainless Snaplock parts also available from our shop

Snaplock Reducer



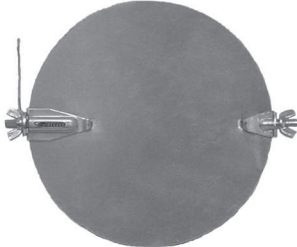
Features

- 26 gauge galvanized
- Large diameter (large end)
- Small diameter (small end)
- Bead to bead body length is 4"

Large End		Small End	Part #	List
4" Dia.	to	3	26R43	\$38
5" Dia.	to	4	26R54	\$38
6" Dia.	to	5	26R65	\$39
	to	4	26R64	\$39
7" Dia.	to	6	26R76	\$42
	to	5	26R75	\$42
8" Dia.	to	7	26R87	\$45
	to	6	26R86	\$44
	to	5	26R85	\$42
9" Dia.	to	8	26R98	\$47
	to	7	26R97	\$47
10" Dia.	to	6	26R96	\$46
	to	9	26R109	\$53
	to	8	26R108	\$53
	to	7	26R107	\$51
	to	6	26R106	\$51

Large End		Small End	Part #	List
12" Dia.	to	10	26R1210	\$58
	to	9	26R129	\$57
	to	8	26R128	\$57
	to	7	26R127	\$55
14" Dia.	to	6	26R126	\$55
	to	12	26R1412	\$64
	to	10	26R1410	\$62
16" Dia.	to	8	26R148	\$61
	to	14	26R1614	\$76
	to	12	26R1612	\$73
	to	10	26R1610	\$71

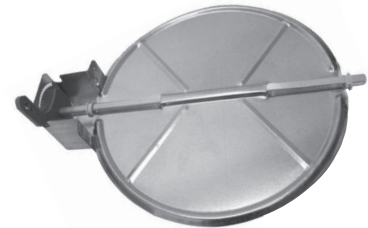
Damper Kits



Model RB

- Galvanized round damper
- Damper hardware included
- Hand quadrant included

Size	Part #	List
4" Dia.	RB4	\$15
5" Dia.	RB5	\$15
6" Dia.	RB6	\$15
7" Dia.	RB7	\$16
8" Dia.	RB8	\$17
9" Dia.	RB9	\$18
10" Dia.	RB10	\$18
12" Dia.	RB12	\$20
14" Dia.	RB14	\$22
16" Dia.	RB16	\$26
18" Dia.	RB18	\$30



Model HDRB

- 24 gauge galvanized blade
- 3/8" damper through rod
- 2" self locking standoff regulator
- Two 3/8" plastic bushings included

Size	Part #	List
5" Dia.	HDRB5	\$24
6" Dia.	HDRB6	\$24
7" Dia.	HDRB7	\$27
8" Dia.	HDRB8	\$27
9" Dia.	HDRB9	\$30
10" Dia.	HDRB10	\$30
12" Dia.	HDRB12	\$34
14" Dia.	HDRB14	\$37
16" Dia.	HDRB16	\$48

SPIRAL PIPE & FITTINGS



Spiral - Galvanized Steel

Features

- Constructed in accordance with SMACNA standards
- Galvanized steel construction
- Elbows 4" through 12" diameter are 1-piece stamped, 14" and above are gored construction








Size	Spiral Pipe 10 Ft Part #	90° Elbow Std. Radius 1.5 x CL Part #	90° Elbow Short Radius 1.0 x CL Part #	45° Elbow Std. Radius 1.5 x CL Part #	45° Elbow Short Radius 1.0 x CL Part #	Coupling For Pipe Part #	Coupling For Fitting Part #	End Cap Part #
4" Dia.	\$65 SP4	\$42 E904	\$42 ES904	\$40 E454	\$40 ES454	\$18 NP4	\$18 FCL4	\$36 ES4
5" Dia.	\$73 SP5	\$47 E905	\$47 ES905	\$42 E455	\$42 ES455	\$18 NP5	\$18 FCL5	\$37 ES5
6" Dia.	\$81 SP6	\$48 E906	\$48 ES906	\$47 E456	\$47 ES456	\$19 NP6	\$19 FCL6	\$41 ES6
7" Dia.	\$90 SP7	\$73 E907	\$73 ES907	\$54 E457	\$54 ES457	\$21 NP7	\$21 FCL7	\$43 ES7
8" Dia.	\$99 SP8	\$78 E908	\$78 ES908	\$50 E458	\$50 ES458	\$24 NP8	\$24 FCL8	\$44 ES8
9" Dia.	\$108 SP9	\$107 E909	\$107 ES909	\$73 E459	\$73 ES459	\$24 NP9	\$24 FCL9	\$46 ES9
10" Dia.	\$117 SP10	\$103 E9010	\$103 ES9010	\$71 E4510	\$71 ES4510	\$26 NP10	\$26 FCL10	\$52 ES10
12" Dia.	\$137 SP12	\$134 E9012	\$134 ES9012	\$86 E4512	\$86 ES4512	\$28 NP12	\$28 FCL12	\$62 ES12
14" Dia.	\$157 SP14	\$174 E9014	\$174 ES9014	\$121 E4514	\$121 ES4514	\$32 NP14	\$32 FCL14	\$68 ES14
16" Dia.	\$185 SP16	\$214 E9016	\$214 ES9016	\$137 E4516	\$137 ES4516	\$35 NP16	\$35 FCL16	\$73 ES16
18" Dia.	\$267 SP18	\$257 E9018	-	\$157 E4518	-	\$43 NP18	\$43 FCL18	\$88 ES18
20" Dia.	\$290 SP20	\$296 E9020	-	\$175 E4520	-	\$52 NP20	-	\$109 ES20
22" Dia.	\$323 SP22	\$336 E9022	-	\$202 E4522	-	\$62 NP22	-	\$123 ES22
24" Dia.	\$362 SP24	\$377 E9024	-	\$224 E4524	-	\$69 NP24	-	\$140 ES24




SPIRAL PIPE & FITTINGS



304 Stainless Steel Spiral Duct & Fittings

					
Size	Spiral Pipe 10 Ft Part #	90° Elbow Std. Radius 1.5 x CL Part #	45° Elbow Std. Radius 1.5 x CL Part #	Coupling For Pipe Part #	End Cap Part #
4" Dia.	\$232 304SP4	\$182 304E904	\$139 304E454	\$41 304NP4	\$89 304ES4
6" Dia.	\$313 304SP6	\$193 304E906	\$137 304E456	\$49 304NP6	\$104 304ES6
8" Dia.	\$388 304SP8	\$231 304E908	\$164 304E458	\$59 304NP8	\$113 304ES8
10" Dia.	\$480 304SP10	\$290 304E9010	\$187 304E4510	\$67 304NP10	\$122 304ES10
12" Dia.	\$560 304SP12	\$364 304E9012	\$237 304E4512	\$77 304NP12	\$139 304ES12
14" Dia.	\$710 304SP14	14" Dia. Fittings Made to Order			
16" Dia.	\$800 304SP16	16" Dia. Fittings Made to Order			

Aluminum Spiral Duct & Fittings

					
Size	Spiral Pipe 10 Ft Part #	90° Elbow Std. Radius 1.5 x CL Part #	45° Elbow Std. Radius 1.5 x CL Part #	Coupling For Pipe Part #	End Cap Part #
4" Dia.	\$182 ASP4	\$155 AE904	\$119 AE454	\$35 ANP4	\$78 AES4
6" Dia.	\$234 ASP6	\$166 AE906	\$120 AE456	\$42 ANP6	\$90 AES6
8" Dia.	\$287 ASP8	\$203 AE908	\$145 AE458	\$51 ANP8	\$97 AES8
10" Dia.	\$354 ASP10	\$259 AE9010	\$165 AE4510	\$58 ANP10	\$107 AES10
12" Dia.	\$412 ASP12	\$326 AE9012	\$210 AE4512	\$65 ANP12	\$120 AES12

SPIRAL FITTINGS



RC - Spiral Reducer



Note: Body length bead to bead is 6"
Connections are small end

Size	Part #	List
4 to 3	RC43	\$40
5 to 4	RC54	\$40
6 to 4	RC64	\$40
6 to 5	RC65	\$56
7 to 6	RC76	\$56
8 to 4	RC84	\$44
8 to 5	RC85	\$55
8 to 6	RC86	\$56
8 to 7	RC87	\$56
9 to 8	RC98	\$61
10 to 6	RC106	\$68
10 to 7	RC107	\$68
10 to 8	RC108	\$68
10 to 9	RC109	\$68

Size	Part #	List
12 to 6	RC126	\$71
12 to 7	RC127	\$71
12 to 8	RC128	\$71
12 to 9	RC129	\$71
12 to 10	RC1210	\$71
14 to 6	RC146	\$80
14 to 8	RC148	\$80
14 to 10	RC1410	\$80
14 to 12	RC1412	\$80
16 to 8	RC168	\$126
16 to 10	RC1610	\$126
16 to 12	RC1612	\$126
16 to 14	RC1614	\$126

Size	Part #	List
18 to 10	RC1810	\$138
18 to 12	RC1812	\$138
18 to 14	RC1814	\$138
18 to 16	RC1816	\$138
20 to 12	RC2012	\$154
20 to 14	RC2014	\$154
20 to 16	RC2016	\$154
20 to 18	RC2018	\$154
22 to 18	RC2218	\$199
22 to 20	RC2220	\$199
24 to 16	RC2416	\$212
24 to 18	RC2418	\$212
24 to 20	RC2420	\$212
24 to 22	RC2422	\$212

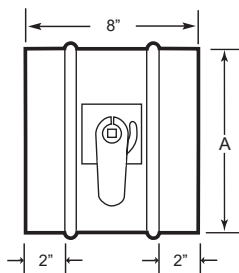
Spiral Tee



Note: Connections are all small end

Size	Part #	List
4" Dia.	T4	\$106
6" Dia.	T6	\$117
8" Dia.	T8	\$137
10" Dia.	T10	\$158
12" Dia.	T12	\$177
14" Dia.	T14	\$202
16" Dia.	T16	\$224

Round Manual Balancing Damper



Features

- 24 gauge frame
- Standoff locking hand quadrant
- 8" frame overall length includes 2" slip connection each end

Size	Part #	List
5" Dia.	RBD5	\$77
6" Dia.	RBD6	\$78
7" Dia.	RBD7	\$82
8" Dia.	RBD8	\$83
9" Dia.	RBD9	\$91
10" Dia.	RBD10	\$92
12" Dia.	RBD12	\$97
14" Dia.	RBD14	\$109
16" Dia.	RBD16	\$130

SPIRAL TAPS

DST - Spiral Saddle Tap

No Damper



Note: Body length is 1" to bead

Branch Dia.	Main Duct Dia.	Part #	List
4 on	4	DST4-4	\$37
4 on	6/7	DST4-6/7	\$37
4 on	8	DST4-8	\$37
5 on	7 thru 9	DST5-7/9	\$37
6 on	6	DST6-6	\$37
6 on	8	DST6-8	\$37
6 on	10/12	DST6-10/12	\$37
6 on	14/16/18	DST6-14/16/18	\$37
6 on	20/22/24	DST6-20/22/24	\$37
8 on	8	DST8-8	\$44
8 on	10	DST8-10	\$44
8 on	12/14	DST8-12/14	\$44

Branch Dia.	Main Duct Dia.	Part #	List
8 on	16/18	DST8-16/18	\$44
8 on	20/22/24	DST8-20/22/24	\$44
10 on	10	DST10-10	\$51
10 on	12	DST10-12	\$51
10 on	14/16	DST10-14/16	\$51
10 on	18/20	DST10-18/20	\$51
10 on	22/24	DST10-22/24	\$51
12 on	12	DST12-12	\$57
12 on	14/16	DST12-14/16	\$57
12 on	18/20	DST12-18/20	\$57
12 on	22/24	DST12-22/24	\$57

With Damper



Note: Length from saddle body to connection bead is 5 1/2"

Branch Dia.	Main Duct Dia.	Part #	List
4 on	4	VD-DST4-4	\$61
4 on	6/7	VD-DST4-6/7	\$61
4 on	8	VD-DST4-8	\$61
5 on	7 thru 9	VD-DST5-7/9	\$67
6 on	6	VD-DST6-6	\$70
6 on	8	VD-DST6-8	\$70
6 on	10/12	VD-DST6-10/12	\$70
6 on	14/16/18	VD-DST6-14/16/18	\$70
6 on	20/22/24	VD-DST6-20/22/24	\$70
8 on	8	VD-DST8-8	\$79
8 on	10	VD-DST8-10	\$79
8 on	12/14	VD-DST8-12/14	\$79

Branch Dia.	Main Duct Dia.	Part #	List
8 on	16/18	VD-DST8-16/18	\$79
8 on	20/22/24	VD-DST8-20/22/24	\$79
10 on	10	VD-DST10-10	\$91
10 on	12	VD-DST10-12	\$91
10 on	14/16	VD-DST10-14/16	\$91
10 on	18/20	VD-DST10-18/20	\$91
10 on	22/24	VD-DST10-22/24	\$91
12 on	12	VD-DST12-12	\$100
12 on	14/16	VD-DST12-14/16	\$100
12 on	18/20	VD-DST12-18/20	\$100
12 on	22/24	VD-DST12-22/24	\$100

RATT & RATD - Round Pipe Saddle Tap - Low Pressure



Features

- 26 gauge galvanized steel
- 1-½" flange with stick on gasket
- RATT (no damper)
- RATD (with volume damper)

Optional 2" Handle Standoff on RATD

To order, preface part RATD with 'S'
List add \$5

Branch Dia.	Main Duct Dia.	RATT No Damper Part #	RATD With Damper Part #
4" Dia.	6 thru 8	\$33 RATT4	\$49 RATD4
5" Dia.	6 thru 8	\$33 RATT5	\$50 RATD5
6" Dia.	8 thru 12	\$34 RATT6	\$51 RATD6
7" Dia.	8 thru 12	\$36 RATT7	\$52 RATD7
8" Dia.	10 thru 14	\$40 RATT8	\$58 RATD8
9" Dia.	10 thru 14	\$46 RATT9	\$60 RATD9
10" Dia.	12 thru 16	\$48 RATT10	\$66 RATD10
12" Dia.	14 thru 18	\$55 RATT12	\$75 RATD12
14" Dia.	16 thru 20	\$71 RATT14	\$90 RATD14

Blast Gate



Stocked

- Galvanized blade
- Cast aluminum body

Size	Part #	List
3" Dia.	FG3	\$51
4" Dia.	FG4	\$51
5" Dia.	FG5	\$70
6" Dia.	FG6	\$87
7" Dia.	FG7	\$110
8" Dia.	FG8	\$146
10" Dia.	FG10	\$285
12" Dia.	FG12	\$307
14" Dia.	FG14	\$547
16" Dia.	FG16	\$634

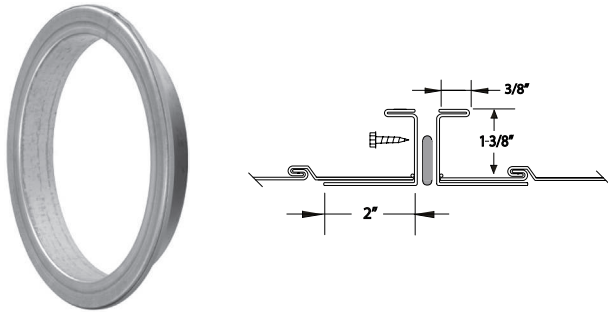
Made to Order

- Stainless steel blade
- Cast aluminum body

Size	Part #	List
3" Dia.	SS-FG3	\$200
4" Dia.	SS-FG4	\$200
5" Dia.	SS-FG5	\$216
6" Dia.	SS-FG6	\$246
7" Dia.	SS-FG7	\$275
8" Dia.	SS-FG8	\$318
10" Dia.	SS-FG10	\$441
12" Dia.	SS-FG12	\$491
14" Dia.	SS-FG14	\$743
16" Dia.	SS-FG16	\$830

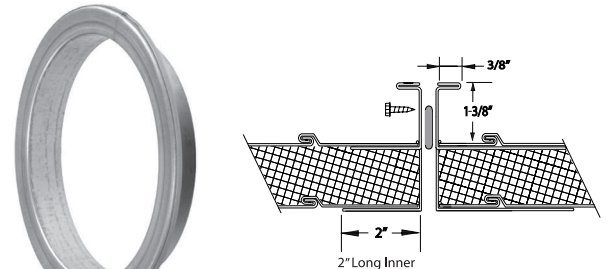
Spiral Flanges

ACF - Single Wall Accuflange



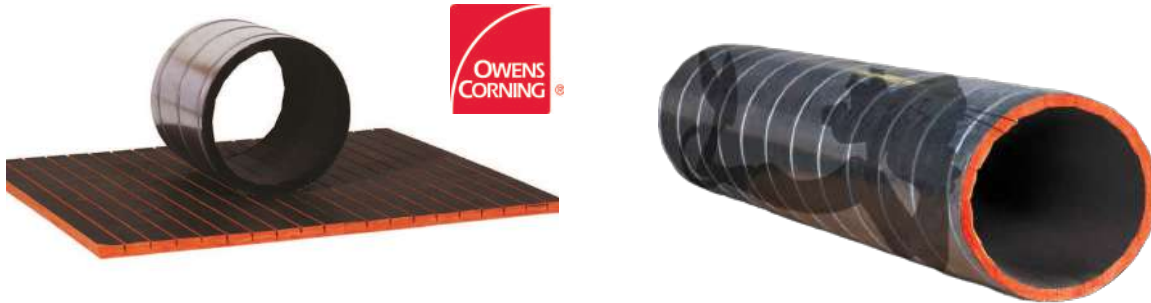
Size	Part #	List
8" Dia.	ACF8	\$39
10" Dia.	ACF10	\$39
12" Dia.	ACF12	\$40
14" Dia.	ACF14	\$42
16" Dia.	ACF16	\$44
18" Dia.	ACF18	\$46
20" Dia.	ACF20	\$48
22" Dia.	ACF22	\$50
24" Dia.	ACF24	\$53
26" Dia.	ACF26	\$67
28" Dia.	ACF28	\$71
30" Dia.	ACF30	\$74
32" Dia.	ACF32	\$79
34" Dia.	ACF34	\$83
36" Dia.	ACF36	\$88
38" Dia.	ACF38	\$93
40" Dia.	ACF40	\$99
42" Dia.	ACF42	\$105
44" Dia.	ACF44	\$111
46" Dia.	ACF46	\$117
48" Dia.	ACF48	\$124

DWACF - Double Wall 1" Accuflange



Size OD	Part #	List
8" Dia.	DWACF8	\$75
10" Dia.	DWACF10	\$75
12" Dia.	DWACF12	\$75
14" Dia.	DWACF14	\$75
16" Dia.	DWACF16	\$84
18" Dia.	DWACF18	\$88
20" Dia.	DWACF20	\$91
22" Dia.	DWACF22	\$94
24" Dia.	DWACF24	\$97
26" Dia.	DWACF26	\$124
28" Dia.	DWACF28	\$134
30" Dia.	DWACF30	\$147
32" Dia.	DWACF32	\$165
34" Dia.	DWACF34	\$172
36" Dia.	DWACF36	\$179
38" Dia.	DWACF38	\$194
----	----	----
----	----	----
----	----	----
----	----	----
----	----	----

Spiral Duct Liner - Owens Corning QuietR®



Description

Owens Corning® QuietR® Spiral Duct Liner is tailored to fit your specific duct size, compression at grooves and joints kept to a minimum, providing consistent thermal performance throughout the entire duct system.

Features

- Outstanding thermal and acoustical performance
- Economical, cost effective alternative to round double-wall configuration air ducts
- Cleanable surface with a black mat facing
- Bacterial and fungal growth resistant with an EPA registered biocide that protects the airstream surface from microbial growth

Thermal Performance

AT 75°F (24°C) MEAN TEMPERATURE	1"	1 1/2"
R-value: ft ² •°F/BTU (RSI: m ² •°C/W)	4.30	6.50
k-value: BTU•in/hr•ft ² •°F (I W/m ² •°C)	0.23	0.23

Accoustical Performance

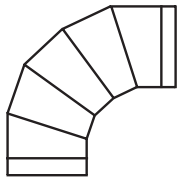
Sound absorption coefficients at octave band center frequencies, Hz.

THICKNESS	125	250	500	1000	2000	4000	NRC
1"	0.10	0.24	0.74	1.02	1.06	1.06	0.75
1 1/2"	0.15	0.42	1.03	1.12	1.07	1.06	0.90

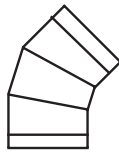


All spiral pipe and fittings fabricated by ADC can be provided as lined

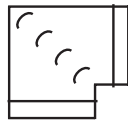
Spiral Duct All Fittings Chart



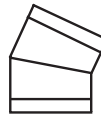
E90



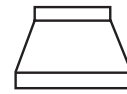
E45



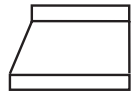
E290/E290V



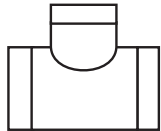
XELB



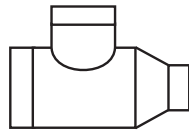
RC



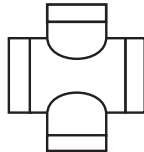
RE



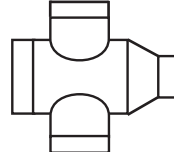
T



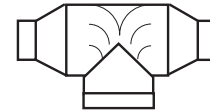
TR



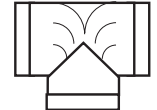
TX



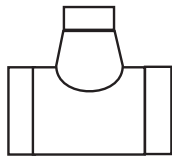
TXR



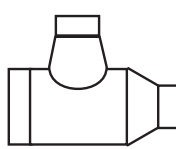
TBVR



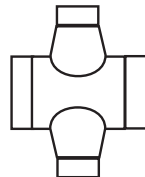
TBV



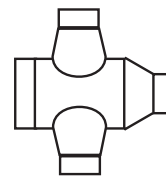
TC



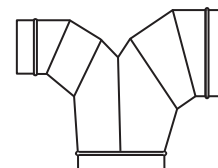
TCR



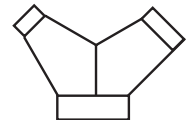
TXC



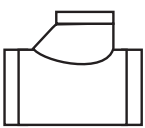
TXCR



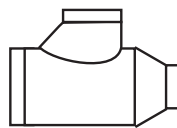
BV



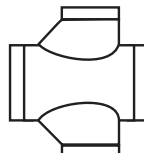
Y



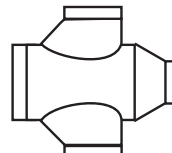
TL



TCR



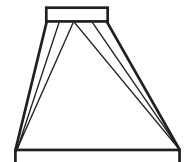
TLX



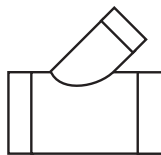
TLXR



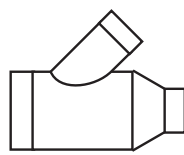
RTR-C



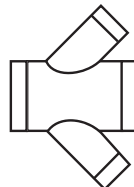
RTR-NC



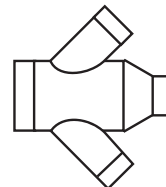
L



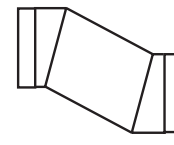
LR



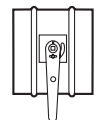
LX



LXR



Z



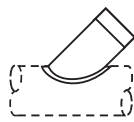
RBD



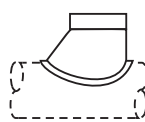
DST



CST



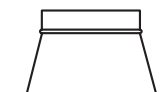
LST



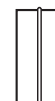
HEST



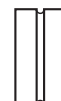
BL



CT



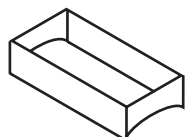
NP



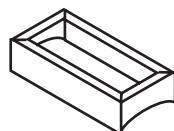
FP



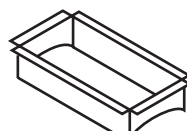
EC



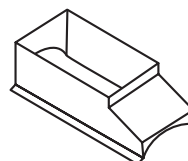
RST-R



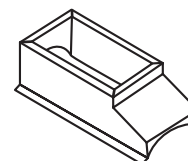
RTS-TI



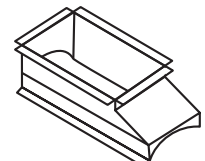
RST-TO



45RST-R



45RTS-TI

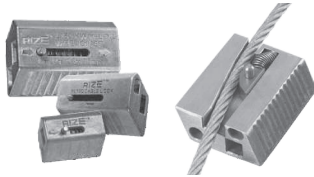


45RST-TO

Cable Lock Hanging System

Features

- 5:1 safety factor for working load
- Meets SMACNA testing
- UL listed and tested to standard UL1598



Working Load Table

Safe Working Load	Cable Diameter	Cable Lock Model
25 - 150 lbs.	3/32"	CL12-WC3
25 - 225 lbs.	1/8"	CL18-WC4

Cable Lock Only

Part #	List
CL12-WC3	\$91 per box of 10
CL18-WC4	\$143 per box of 10

Looped Cable Sling

Description	Part #	List
3/32" x 10 Ft	LC10WC3	\$136 per bag of 10
3/32" x 15 Ft	LC15WC3	\$166 per bag of 10
1/8" x 10 Ft	LC10WC4	\$192 per bag of 10
1/8" x 15 Ft	LC15WC4	\$220 per bag of 10

90 Degree, 1/4" Eyelet with Attached Cable

Description	Part #	List
3/32" x 10 Ft	9014-10WC3	\$150 per bag of 10
3/32" x 15 Ft	9014-15WC3	\$188 per bag of 10
1/8" x 10 Ft	9014-10WC4	\$224 per bag of 10
1/8" x 15 Ft	9014-15WC4	\$283 per bag of 10

Quick Sleeve Clamp



Features

- Offers quick leak-free connection
- Allows for quick disassembly of duct

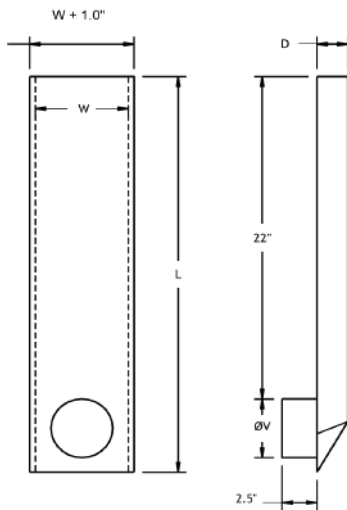
Size	Part #	List
4" Dia.	QS4	\$72
5" Dia.	QS5	\$77
6" Dia.	QS6	\$88
8" Dia.	QS8	\$95
10" Dia.	QS10	\$107
12" Dia.	QS12	\$119

Subduct Riser - LSR



Features

- 26 gauge galvanized steel
- Vent connection 'V' large end standard. Small end connection available upon request
- Compliant to IBC 2006, Section 716.5



Dia. 'V'	L	W	D	List Price
4	27 ½	6	2	Call for Pricing
6	29 ½	9	3 ½	
8	31 ½	12	4 ½	
10	33 ½	15	6	

Tall Cone Flashing



Size	Part #	List
4" Dia.	TFP4	\$62
6" Dia.	TFP6	\$66
8" Dia.	TFP8	\$77
10" Dia.	TFP10	\$93
12" Dia.	TFP12	\$111

Storm Collar



Size	Part #	List
4" Dia.	STC4	\$34
6" Dia.	STC6	\$38
8" Dia.	STC8	\$43
10" Dia.	STC10	\$48
12" Dia.	STC12	\$51

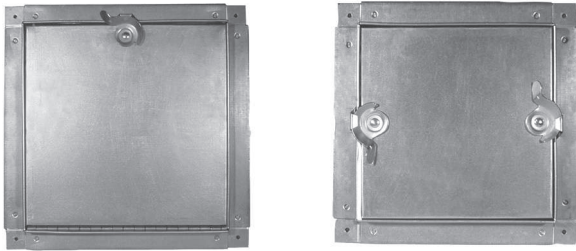
Cone Top



Size	Part #	List
4" Dia.	CT4	\$52
6" Dia.	CT6	\$64
8" Dia.	CT8	\$79
10" Dia.	CT10	\$96
12" Dia.	CT12	\$107

ACCESS DOORS

Flanged Access Doors - (Hinged & Cammed)



Features

- Frame/Door: 24 gauge door
- Insulation: 1" thick fiberglass
- Door Seal: Neoprene blend
- Frame Seal: Polyethylene foam

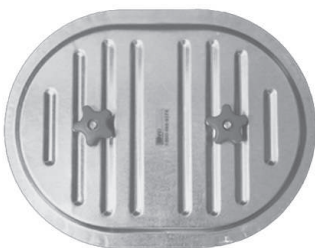
Hinged Access Door

Size	Part #	List
6 x 6	HSAD6X6	\$49
8 x 8	HSAD8X8	\$56
10 x 10	HSAD10X10	\$62
12 x 12	HSAD12X12	\$69
14 x 14	HSAD14X14	\$87
16 x 16	HSAD16X16	\$113
18 x 18	HSAD18X18	\$144
20 x 20	HSAD20X20	\$159
24 x 24	HSAD24X24	\$197

Cammed Access Door

Size	Part #	List
6 x 6	CSAD6X6	\$49
8 x 8	CSAD8X8	\$56
10 x 10	CSAD10X10	\$62
12 x 12	CSAD12X12	\$69
14 x 14	CSAD14X14	\$87
16 x 16	CSAD16X16	\$113
18 x 18	CSAD18X18	\$144
20 x 20	CSAD20X20	\$159
24 x 24	CSAD24X24	\$197

Access Door - High Pressure



Features

- 20 gauge galvanized steel
- Closed cell neoprene gasket to ensure proper sealing
- Tested to 20" WG positive, 10" WG negative

Size	Part #	List
10 x 6	LAD10X6	\$113
16 x 12	LAD16X12	\$228

ACCESS DOORS

Grease Duct High Temperature Access Door



Features

- 16 gauge black iron backing plate
- Meets NFPA 96
- 2300°F service temperature
- Extended studs for duct wrap

Size	Part #	List
10 x 6	BIAD10X6	\$305
16 x 12	BIAD16X12	\$416
18 x 14	BIAD18X14	\$530

Access Doors for Round Duct



Features

- Contoured to spiral/round duct radius
- 20 gauge galvanized steel
- Closed cell neoprene gasket to ensure proper sealing
- Tested to 20" WG positive, 10" WG negative

Size	Pipe Dia	Part #	List
10 x 6	6	LRAD1066	\$128
10 x 6	7,8	LRAD1068	\$128
10 x 6	9,10	LRAD10610	\$128
10 x 6	12	LRAD10612	\$128
10 x 6	14	LRAD10614	\$128
10 x 6	16	LRAD10616	\$128
16 x 12	18	LRAD161218	\$242

Drain Fitting & Cap



Description	Part #	List
Moisture Drain 3/4" Cap	MDRAIN	\$95

Backdraft Damper



Features

- Extruded aluminum frame & blades
- PVC seals on blades
- Medium duty for 1500 FPM velocity

Size	Part #	List
8 x 8	BDA8X8	\$208
10 x 10	BDA10X10	\$244
12 x 12	BDA12X12	\$244
14 x 14	BDA14X14	\$293
16 x 16	BDA16X16	\$293
18 x 18	BDA18X18	\$373
20 x 20	BDA20x20	\$373
24 x 24	BDA24X24	\$445

Round Backdraft Damper



Features

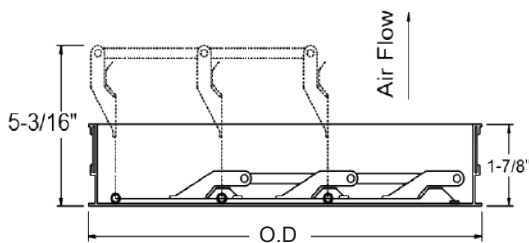
- Backdraft damper with galvanized collar
- Lightweight aluminum blades
- Spring loaded for positive closure

Size	Part #	List
4" Dia.	RSK4	\$63
6" Dia.	RSK6	\$84
8" Dia.	RSK8	\$101
10" Dia.	RSK10	\$140
12" Dia.	RSK12	\$183

Fan Backdraft Damper



Cook Models			Backdraft Damper		
ACE/ACRU	SQN	PR-Exh	O.D. - Square	Part #	List
60 - 101	90 - 100	8	11- ³ / ₄	BD12	\$140
120, 135	-	12	13- ³ / ₄	BD14	\$152
-	120	-	15- ³ / ₄	BD16	\$161
-	165	16	21- ³ / ₄	BD22	\$228
-	195	20	25- ³ / ₄	BD26	\$257
270,300	225	24	29- ³ / ₄	BD30	\$297



REMOTE CABLE DAMPERS



Cable Volume Dampers



Features

- Operator end with nylon cable clamp
- Steel radial blade damper – ¼" undersized

5 Foot Cable Length

Size	Cable Length	Part #	List
6" Dia	5 ft Cable	RVD5FT6	\$213
8" Dia	5 ft Cable	RVD5FT8	\$217
10" Dia	5 ft Cable	RVD5FT10	\$232
12" Dia	5 ft Cable	RVD5FT12	\$242
14" Dia	5 ft Cable	RVD5FT14	\$261

Remote Control Damper - Ruskin ZPD25



Features

- Remote powered balancing damper
- 20 gauge frame and blade
- No field wiring required
- Factory wired RJ11 connector at actuator

Damper Only

Size	Part #	List
6" Dia.	ZPD256	\$240
8" Dia.	ZPD258	\$250
10" Dia.	ZPD2510	\$257
12" Dia.	ZPD2512	\$264
14" Dia.	ZPD2514	\$274



Accessories for ZPD25 Damper

Accessory	Part #	List
25 Ft Cat6 Cable	ZCABLE	\$42
Remote Power Pack	ZRC020	\$225

CD - Opposed Blade Control Damper



Standard Construction Features

- 16 gauge frame & blades
- Concealed linkage within frame
- Opposed blades
- 1/2" dia. extended shaft



Construction Options & Accessories

- Blade & jamb seals for low leakage
- Internal actuator linkage
- Locking Hand Quadrant, Part # HQ List **\$26**
- 2" Insulation Standoff, Part # DAMPSTAND List **\$12**

Belimo Actuators

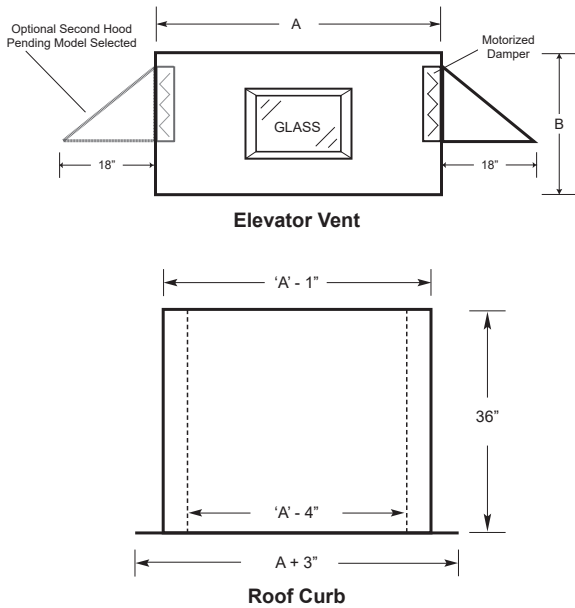


Features

- Mounts on round or square shaft
- Reversible rotation CW or CCW, factory set CW
- Blade position indicator standard

Size	Voltage	End Switch	Part #	List
Up to 5 Sq. Ft (18 In-Lb torque)	120	YES	TFB120S	\$739
	24	YES	TFB24S	\$653
Up to 8 Sq. Ft (35 In-Lb torque)	120	YES	LF120S	\$846
	24	YES	LF24S	\$775
Up to 22 Sq. Ft (60 In-Lb torque)	120/24	YES	NFBUPS	\$1125

PELV - Elevator Roof Vent



Standard Construction Features

- Aluminum construction
- 1/2" insulation under roof hood
- 1/2" birdscreen on underside of weather hood
- 1/8" annealed clear glass panel
- 18x18 weather proof hinged access door opposite side to glass panel
- Motorized opposed blade damper, power closed, fail open, 120 volt with end switch for blade position indication
- Model SSF galvanized roof curb, 36" high



Model	Hood Dimensions		Glass Panel	Damper		Weather Hood			Part #
	A	B		Qty	Size	Qty	Size	Total Free Area	
PELV-321	32	24	18 x 14	1	26 x 18	1	30 x 18	3.3 SQ. FT.	PELV-321-120V
PELV-322	32	24	18 x 14	2	26 x 18	2	30 x 18	6.6 SQ. FT.	PELV-322-120V
PELV-381	38	24	24 x 14	1	32 x 18	1	36 x 18	3.9 SQ. FT.	PELV-381-120V
PELV-382	38	24	24 x 14	2	32 x 18	2	36 x 18	7.8 SQ. FT.	PELV-382-120V
PELV-441	44	24	30 x 14	1	38 x 18	1	42 x 18	4.6 SQ. FT.	PELV-441-120V
PELV-442	44	24	30 x 14	2	38 x 18	2	42 x 18	9.2 SQ. FT.	PELV-442-120V

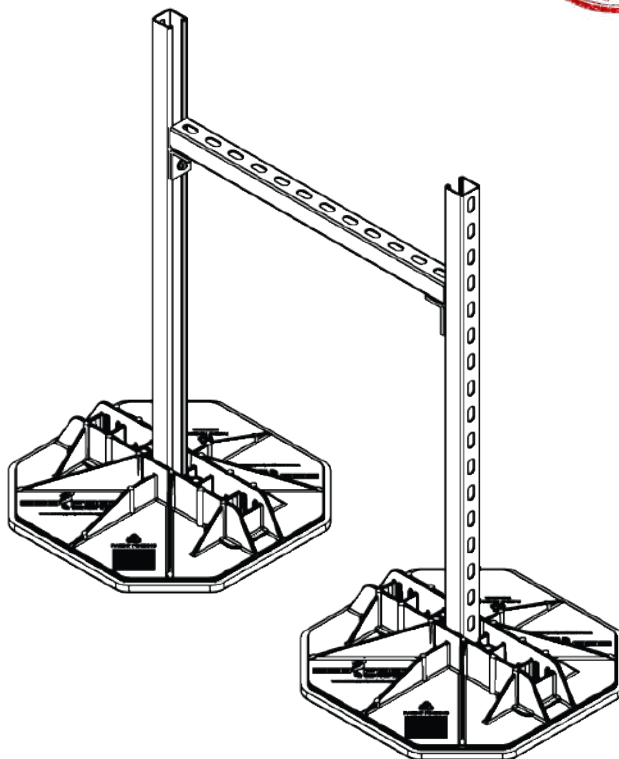
Call for pricing on PELV - Elevator Roof Vents

ROOF SUPPORT SYSTEM

EcoFoot Quick Frame - QF 175

Description:

The QuickFrame 175 is designed to support duct or pipe at almost any desired height. It is built to accommodate 1-5/8" strut or 1/2" threaded rod. The support is designed to be non-penetrative and can be installed on almost all roofing systems. The weight of the mounted product will determine the spacing of the EcoFoot bases.



*Strut not included

Each Kit Includes:

- (2) Injection moulded feet
- (2) Anti-vibration mats
- (2) Strut base caps
- (2) 90° strut brackets
- (2) Spring nuts
- (4) 1/2" bolts

Dimensions:

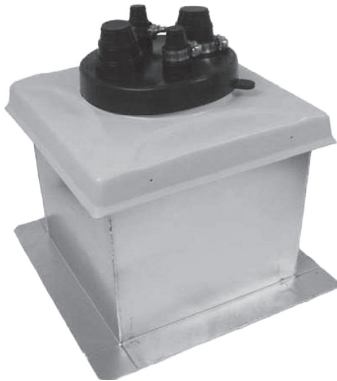
17 1/2" x 17 1/2" x 3" (L x W x H)

Model QF175 (Kit)

List \$422

PIPE FLASHING SYSTEM

Complete Pipe Portal Assembly



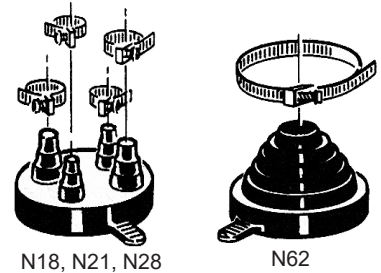
Sold as 3 Separate Components

- Molded EPMD rubber cap with clamps
- Molded ABS cover
- Roof curb



Component 1 - Molded EPMD Rubber Cap with Clamps

Description	Part #	List
N18 Cap - Four 3/8" to 1" Pipes	N18	\$143
N21 Cap - Four 1" to 2" Pipes	N21	\$143
N28 Cap - Two 3/8" to 1" & Two 1" to 2" Pipes	N28	\$143
N62 Cap - One 2" to 6" Pipe	N62	\$143



N18, N21, N28

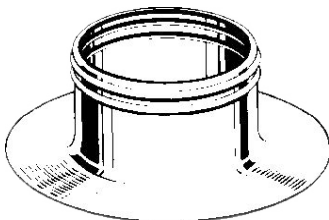
N62

Component 2 - Molded ABS Cover

Description	Part #	List
13" x 13" I.D. Cover	COVER1	\$210

Component 3 - Roof Curb

Description	Part #	List
12" x 12" O.D. Galvanized Curb, 13 1/2" Height	SSF120	\$280

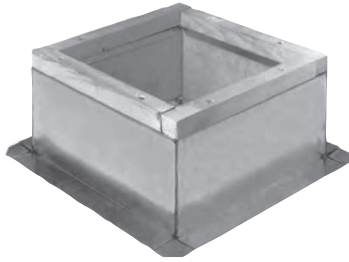


Alumi-Flash (Base Only)

- EPDM cap sold separately - see Component 1 above

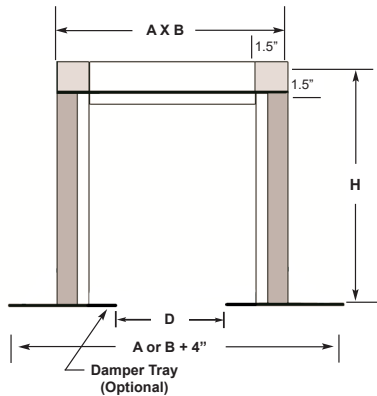
Description	Part #	List
Spun Aluminum Flashing 4" Height, 14" O.D. Base	AFLASH	\$124

Stock Roof Curb



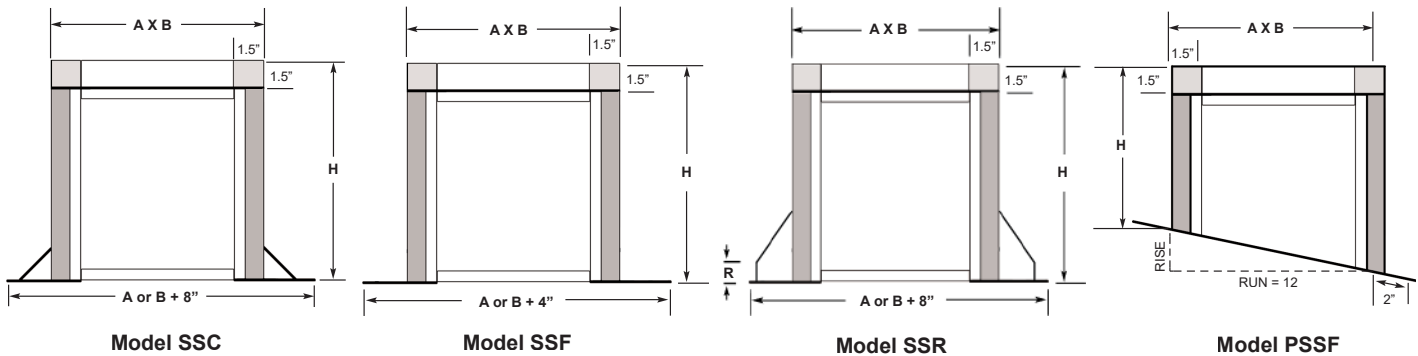
Features

- 18 gauge galvanized steel with welded seams
- 13-1/2" height
- 1" thick, 3 lb. fiberglass insulation
- Wood nailer



A x B	Curb ID	Optional Damper Tray D	Standard Curb	Standard Curb with Damper Tray
16 1/2 x 16 1/2	13 1/2 x 13 1/2	9 3/4 x 9 3/4	\$300 SSF165	\$362 SSFDT165
18 1/2 x 18 1/2	15 1/2 x 15 1/2	11 3/4 x 11 3/4	\$330 SSF185	\$402 SSFDT185
22 1/2 x 22 1/2	19 1/2 x 19 1/2	15 3/4 x 15 3/4	\$387 SSF225	\$466 SSFDT225
26 1/2 x 26 1/2	23 1/2 x 23 1/2	19 3/4 x 19 3/4	\$439 SSF265	\$525 SSFDT265
28 1/2 x 28 1/2	25 1/2 x 25 1/2	21 3/4 x 21 3/4	\$487 SSF285	\$578 SSFDT285
30 1/2 x 30 1/2	27 1/2 x 27 1/2	23 3/4 x 23 3/4	\$541 SSF305	\$638 SSFDT305
34 1/2 x 34 1/2	31 1/2 x 31 1/2	27 3/4 x 27 3/4	\$590 SSF345	\$696 SSFDT345

Roof Curbs



Standard Construction Features

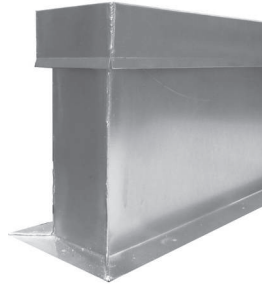
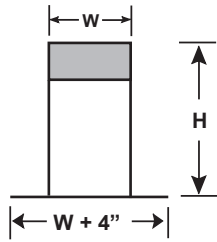
- 18 gauge galvanized steel with welded seams
- 1" thick, 3 lb. fiberglass insulation
- Wood nailer

Optional Construction

- Aluminum construction
- Height up to 36"
- Damper tray
- Metal insulation liner

Equipment Supports

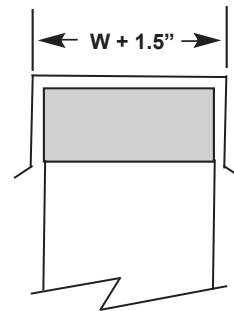
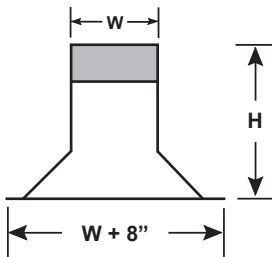
Model ESF - Self Flashing



Standard Construction Features

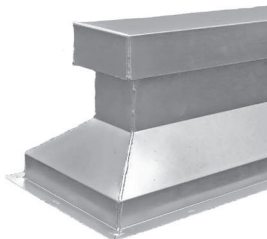
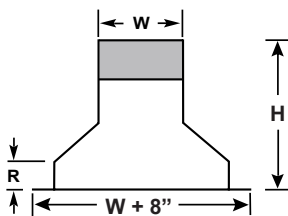
- 18 gauge galvanized steel
- Welded seams
- 12" Height
- Wood nailer
- Flashing cap

Model ESC - Canted



Standard Flashing Cap Detail

Model ESR - Raised Cant



Optional Construction

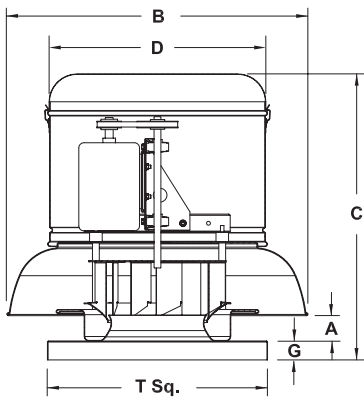
- Height up to 36"
- 16 gauge construction
- Aluminum construction

ACEB - Roof Fan, Belt Driven



Standard Construction Features

- Aluminum non-overloading backward inclined wheel
- Heavy gauge aluminum housing with welded curb cap corners
- Two piece top cap with stainless steel quick release latches
- Galvanized birdscreen
- Permanent lubricated ball bearing motor
- NEMA 1 disconnect switch-shipped loose
- Adjustable pitch drives with static resistant belts for system balancing
- Vibration isolators for motor mount
- UL 705 electrical
- Licensed to bear the AMCA seal for air & sound



Model	A	B	C	D	G	T	Roof Opening	Damper	Curb
ACEB80	2-7/8	23-9/16	21-1/8	16-11/16	2	18	13-1/2	12 X 12	SSF 165
ACEB100	2-7/8	23-9/16	21-1/8	16-11/16	2	18	13-1/2	12 X 12	SSF 165
ACEB120	1-19/16	28-7/16	26-7/8	20-5/16	2	20	15-1/2	14 X 14	SSF 185
ACEB135	2-3/16	28-7/16	27-1/4	20-5/16	2	20	15-1/2	14 X 14	SSF 185

Size	HP	RPM	Drive	Sones @ .25 SP	CFM vs. Static Pressure					Fan		BDD Part #	Curb Part #
					0.125	0.25	0.375	0.50	0.625	0.75	120/60/1 Part #		
80	1/6	1152	1B	5.6	465	376	295				\$1876	\$140	\$301
		1374	1B	8.2	580	518	442	374	ACEB80+1B+16HP				
	1/4	1571	1C	11.1	679	627	567	500	442	181	\$1878		
		1630	1C	11.9	709	659	603	537	479	418			
		1748	1C	12.8	767	720	672	613	553	501			
1806	1C	13.7	796	750	704	650	590	538	ACEB80+1C+25HP				
100	1/6	1346	2C	7.4	696	638	564	389			\$1860	\$140	\$301
		1752	2C	11.1	938	891	848	800	740	657			
	1818	2C	11.9	978	932	890	846	793	723	\$1876			
	1/4	1884	2D	12.8	1017	972	931	890	842		782		
		1950	2D	13.7	1056	1012	972	933	889		836		

See page 62 for instructions on ordering Cook Belt Driven Fans

ACEB - Roof Fan, Belt Driven

Size	HP	RPM	Drive	Sones @ .25 SP	CFM vs. Static Pressure						Fan		BDD Part #	Curb Part #
					0.125	0.25	0.375	0.50	0.625	0.75	120/60/1 Part #	460/208/60/3 Part #		
120	1/6	987	3A	5.1	955	846	698				\$2133 ACEB120+3A+16HP	-	\$152 BD14	\$330 SSF185
		1151	3A	7.4	1146	1053	961	831						
		1313	3A	9.6	1331	1252	1169	1088	981					
	1/4	1411	3C	10.8	1441	1368	1299	1216	1137		\$2137 ACEB120+3C+25HP	-		
		1510	3C	11.9	1552	1484	1414	1342	1272					
	1/3	1590	3D	12.8	1641	1577	1511	1443	1376		\$2179 ACEB120+3D+33HP	-		
1669		3D	13.0	1729	1668	1606	1541	1476						
135	1/4	1159	4A	9.7	1671	1570	1465	1361	1220		\$2181 ACEB135+4A+25HP	-	\$152 BD14	\$330 SSF185
		1240	4A	11.3	1801	1708	1610	1513	1410					
	1/3	1306	4B	12.3	1906	1818	1726	1633	1541		\$2212 ACEB135+4B+33HP	-		
		1371	4B	13.2	2010	1926	1839	1750	1663					
	1/2	1473	4C	14.7	2171	2094	2014	1931	1849		\$2342 ACEB135+4C+50HP1PH	\$2595 ACEB135+4C+50HP3PH		
		1574	4C	16.2	2330	2258	2184	2108	2030					

See page 62 for instructions on ordering Cook Belt Driven Fans

Optional Accessories Available

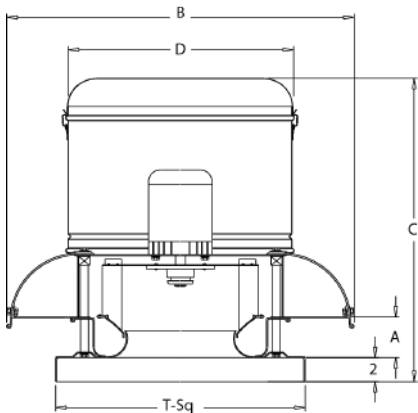
- 13-1/2" galvanized roof curb, ADC Model SSF. See Model SSFDT on page 44 for curbs with damper tray option
- Exhaust gravity backdraft damper, Cook Model BD
- Damper motor kits (See page 60 for details)

ACED-VF - Roof Fan with Direct Drive EC Motor

Standard Construction Features



- Aluminum non-overloading backward inclined wheel
- Heavy gauge aluminum housing with welded curb cap corners
- Two piece top cap with stainless steel quick release latches
- Galvanized birdscreen
- Preprogrammed electronically commuted Vari-Flow motor
- Built-in speed adjustment screw on fan/motor
- NEMA1 disconnect switch - mounted & wired
- UL 705 electrical
- Licensed to bear the AMCA seal for air & sound



Size	A	B	C	D	T Sq	Roof Opening	Damper	Curb
101	2- ³ / ₈	23- ⁹ / ₁₆	21- ¹ / ₈	16- ³ / ₄	18	13.5 X 13.5	12 X 12	SSF 165
120	1- ⁷ / ₁₆	28- ⁷ / ₁₆	27- ¹ / ₁₆	20- ³ / ₈	20	15.5 X 15.5	14 X 14	SSF 185
135	1- ¹⁵ / ₁₆	28- ⁷ / ₁₆	28- ¹¹ / ₁₆	20- ³ / ₈	20	15.5 X 15.5	14 X 14	SSF 185
150	2- ¹³ / ₁₆	32- ⁷ / ₈	29- ³ / ₁₆	23- ¹³ / ₁₆	24	19.5 X 19.5	18 X 18	SSF 225
165	3- ⁵ / ₁₆	32- ⁷ / ₈	29- ³ / ₁₆	23- ¹³ / ₁₆	24	19.5 X 19.5	18 X 18	SSF 225

Optional Accessories Available

- 13-¹/₂" galvanized roof curb, ADC Model SSF. See Model SSFDT on page 44 for curbs with damper tray option
- Exhaust gravity backdraft damper, Cook Model BD
- Damper motor kits (See page 60 for details)
- Fan controls (See page 61 for details)

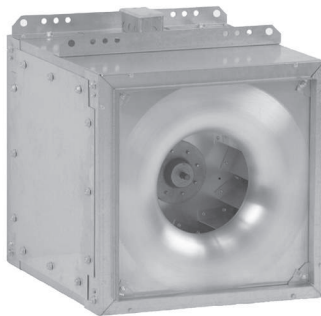
ACED-VF - Fan Performance



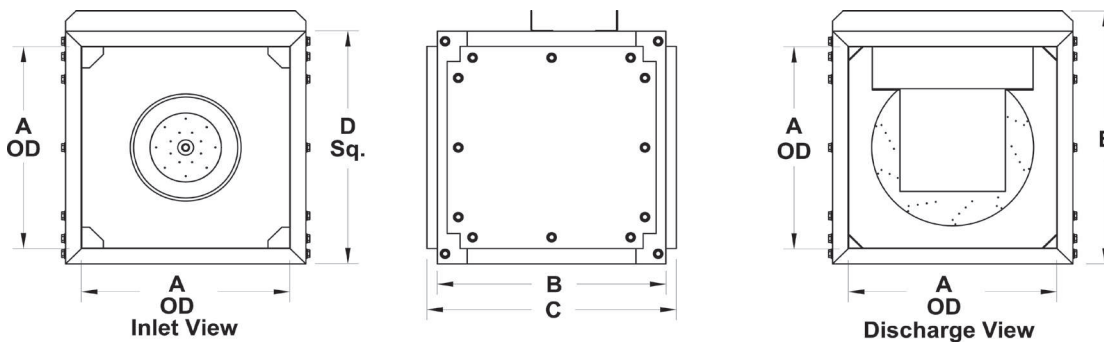
Size	HP	RPM	Sones @ .25 SP	HP Range	Static Pressure						Fan 120/60/1 Part#	Backdraft Damper Part#	13-1/2" Galv. Curb Part#		
					.125"	.250"	.375"	.500"	.625	.75"					
101	1/8	945	3.2	Low	200	260	310	375	400	\$2325 ACED101VF18	\$140 BD12	\$301 SSF165			
		1618	9.8	High	880	810	750	660	560						
	1/6	1635	10.0	Low	890	820	760	670	580	\$2325 ACED101VF16					
		1684	10.4	High	920	850	820	770	700				550		
120	1/3	769	2.7	Low	350	450	550	650	725	775	\$2801 ACED120VF13	\$152 BD14	\$331 SSF185		
		1706	14.4	High	1770	1710	1650	1575	1480	1410					
135	1/8	697	3.0	Low	550	650	790				\$2783 ACED135VF18	\$152 BD14	\$331 SSF185		
		945	6.2	High	1320	1165	1000								
	1/6	951	6.3	Low	1330	1175	1010	900						\$2783 ACED135VF16	
		1048	7.8	High	1480	1340	1190	1040							
	1/4	1053	7.9	Low	1490	1350	1200	1050	1000					\$2783 ACED135VF14	
		1184	10.2	High	1715	1565	1490	1360	1210						
	1/3	1190	10.4	Low	1730	1575	1500	1370	1230	1100				\$2838 ACED135VF13	
		1345	12.8	High	1930	1825	1720	1620	1490	1360					
	1/2	1351	12.9	Low	1940	1835	1730	1630	1500	1370				\$2838 ACED135VF12	
		1545	15.8	High	2250	2140	2050	1970	1870	1740					
150	1/3	1070	10.2	Low	2150	2000	1800	1700	1600	1450	\$3222 ACED150VF13	\$171 BD18	\$389 SSF225		
		1165	12.3	High	2360	2220	2060	1900	1780	1620					
	1/2	1169	12.4	Low	2370	2230	2080	1910	1790	1630	\$3222 ACED150VF12				
		1317	15.6	High	2760	2565	2500	2340	2170	2100					
165	1/3	918	9.0	Low	2450	2250	2060	1880	1680	1400	\$3622 ACED165VF13	\$171 BD18	\$389 SSF225		
		982	10.4	High	2650	2450	2250	2090	1900	1620					
	1/2	985	10.5	Low	2675	2460	2275	2100	1925	1630	\$3622 ACED165VF12				
		1025	11.4	High	3120	2585	2775	2570	2425	2270					

SQND-VF Inline Fan with Direct Drive EC Motor

Standard Construction Features



- Aluminum non-overloading backward inclined wheel
- Galvanized steel housing
- Three removable access doors
- Closed cell neoprene gasketing
- Inlet and discharge duct collars
- Universal mounting feet
- Preprogrammed electronically commuted Vari-Flow motor
- Built-in speed adjustment screw on fan/motor
- NEMA1 disconnect switch - mounted & wired
- UL 705 electrical
- Licensed to bear the AMCA seal for air & sound



Size	A	B	C	D	E	Inlet & Rear Duct Size	Damper
100	12	20	22	14	15- ⁹ / ₁₆	12 X 12	12 x 12
120	16	20	22	18- ⁷ / ₁₆	20	16 X 16	16 x 16
150	20	21- ⁷ / ₈	23- ⁷ / ₈	23	25- ¹ / ₁₆	20 X 20	20 X 20

Optional Accessories Available

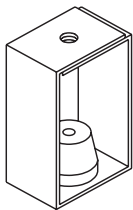
- Exhaust gravity backdraft damper, Cook Model BD
- Damper motor kits (See page 60 for details)
- Fan controls (See page 61 for details)

SQND-VF Fan Performance



Size	HP	RPM	Sones @ .25 SP	HP Range	CFM vs. Static Pressure					Fan 120/60/1 Part #	Backdraft Damper Part #
					.125"	.25"	.375"	.50"	.75"		
100	1/8	1111	4.5	Low	180	260	310	355		\$2933 SQND100VF18	\$140 BD12
		1566	7.6	High	815	740	650	565			
	1/6	1574	7.7	Low	820	745	660	570		\$2933 SQND100VF16	
		1725	9.1	High	895	840	780	705			
120	1/8	821	2.8	Low	375	520	630			\$3445 SQND120VF18	\$161 BD16
		1176	8.0	High	1150	1025	870				
	1/6	1180	8.0	Low	1160	1030	880	745		\$3445 SQND120VF16	
		1308	9.5	High	1295	1180	1055	920			
	1/4	1317	9.6	Low	1300	1190	1060	925	900	\$3445 SQND120VF14	
		1515	12.3	High	1510	1415	1310	1190	975		
	1/3	1519	12.4	Low	1515	1420	1315	1195	980	\$3501 SQND120VF13	
		1635	14.0	High	1680	1550	1505	1410	1210		
	1/2	1644	14.2	Low	1685	1560	1510	1415	1205	\$3501 SQND120VF12	
		1717	15.2	High	1710	1640	1580	1515	1370		
150	1/3	1058	9.7	Low	1975	1800	1610	1420		\$3781 SQND150VF13	\$208 BD20
		1164	11.5	High	2190	2040	1880	1700			
	1/2	1169	11.6	Low	2200	2050	1890	1710	1475	\$3781 SQND150VF12	
		1306	13.8	High	2570	2350	2280	2150	1830		
	5/8	1308	13.8	Low	2580	2355	2290	2160	1840	\$4181 SQND150VF58	
		1445	16.3	High	2790	2650	2520	2400	2110		
	3/4	1449	16.4	Low	2800	2660	2530	2410	2120	\$4181 SQND150VF34	
		1539	18.0	High	2980	2850	2720	2610	2350		
	1	1543	18.1	Low	2990	2860	2730	2620	2360	\$4181 SQND150VF1	
		1691	21.0	High	3310	3170	3065	2950	2790		

Rubber-In-Shear Hanging Vibration Isolators



Features

- Maximum load 300 lbs.
- .25" deflection
- Set of 4 isolators

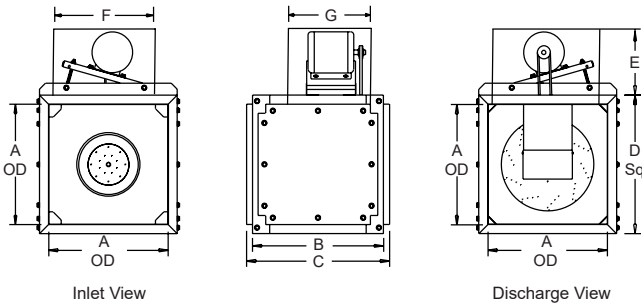
Description	Part #	List
Rated For SQND Sizes 100, 120, & 150	RC75	\$167

SQNB Inline Fan, Belt Drive

Standard Construction Feature



- Aluminum non-overloading backward inclined wheel
- Galvanized steel housing
- Three removable access doors
- Closed cell neoprene gasketing
- Inlet and discharge duct collars
- Permanent lubricated ball bearing motor
- Adjustable pitch drives with static resistant belts for system balancing
- UL 705 electrical
- Licensed to bear the AMCA seal for air & sound
- NEMA 1 disconnect switch-shipped loose
- OSHA motor cover/guard

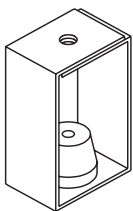


Size	A	B	C	D	E	F	G	Damper
80	12	20	22	14	14	13-1/2	16-1/4	12 x 12
100	12	20	22	14	14	13-1/2	16-1/4	12 x 12
120	16	20	22	18-7/16	16	15-1/2	20	16 x 16
135	18	20-1/4	22-1/4	20-3/4	16	15-1/2	20	18 X 18

Size	HP	RPM	Drive	Sones @ .25 SP	CFM vs. Static Pressure				Fan	BDD Part #
					0.25"	0.50"	0.75"	1.0"	120/60/1 Part #	
80	1/4	1426	10A	7.7	500	360			\$3376 SQNB80+10A+25HP	\$140 BD12
		1624	10A	10.0	605	474				
		1973	10A	13.8	782	682	570			
100	1/4	1582	11A	8.8	750	594			\$3494 SQNB100+11A+25HP	\$140 BD12
		1850	11A	11.2	917	800	649			

See page 63 for instructions on ordering Cook Belt Driven Fans

Rubber-In-Shear Hanging Vibration Isolators (Set of 4)



Description	Part #	List
SQNB Sizes 80 thru 150, 300 lb Rating	RC75	\$167

SQNB Inline Fan, Belt Drive

Size	HP	RPM	Drive	Sones @ .25 SP	CFM vs. Static Pressure				Fan		BDD Part #
					0.25"	0.50"	0.75"	1.0"	120/60/1 Part #	460/208/60/3 Part #	
120	1/4	1252	12A	8.5	1070	896			\$3724	-	\$161 BD16
		1444	12A	10.8	1295	1130	970		SQNB120+12A+25HP		
	1/3	1515	12B	11.7	1375	1208	1077		\$3771	-	
		1614	12B	13.0	1485	1333	1205		SQNB120+12B+33HP		
	1/2	1650	12C	13.5	1525	1370	1245	1092	\$3784	\$4037	
		1789	12C	15.5	1676	1535	1410	1280	SQNB120+12C+50HP1PH	SQNB120+12C+50HP3PH	
	3/4	1895	12D	17.5	1790	1660	1525	1425	-	\$4093	
		2103	12D	21.0	2012	1900	1776	1655		SQNB120+12D+75HP3PH	

See page 63 for instructions on ordering Cook Belt Driven Fans

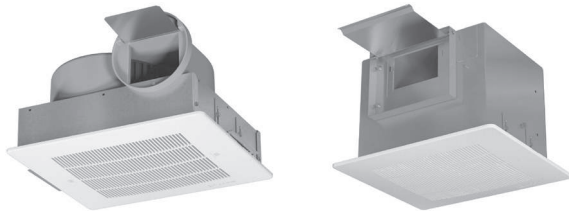
Optional Accessories Available

- Exhaust gravity backdraft damper, Cook Model BD
- Damper motor kits (See page 60 for details)

Standard Construction Features

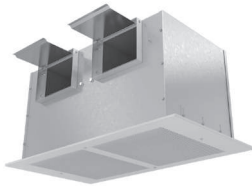
- Automatic backdraft damper located in discharge
- Motors feature thermal overload protection
- Disconnect plug
- AMCA rated for air & sound

GC - Ceiling Cabinet Fan



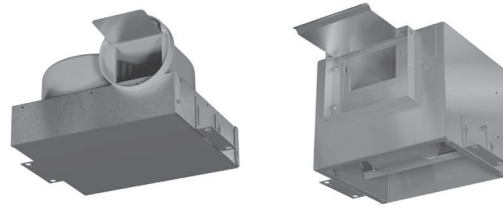
Size 120 - 180

Size 200 - 700



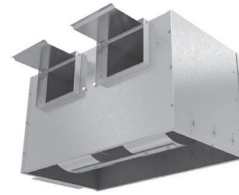
Size 800 & 900

GN - Inline Cabinet Fans



Size 120 - 180

Size 200 - 700



Size 800 & 900

Size	Outlet	Grille Size
120 - 180	5- ¹⁵ / ₁₆ Dia	15- ¹ / ₂ x 13- ¹ / ₄
200	6 x 4- ¹ / ₂	15- ¹ / ₂ x 13- ¹ / ₄
300	8 x 6	15- ¹ / ₂ x 13- ¹ / ₄
422 - 500	8 x 6	21 x 14- ¹ / ₄
600 - 700	10- ¹ / ₂ x 4- ³ / ₄	21 x 14- ¹ / ₄
800	20 x 6	31- ³ / ₈ x 17- ¹ / ₈
900	24- ¹ / ₄ x 6	35- ¹ / ₈ x 17- ¹ / ₈

Size	Outlet	Inlet
120 - 180	5- ¹⁵ / ₁₆ Dia	14 x 3- ¹ / ₄
200	6 x 4- ¹ / ₂	12- ⁵ / ₁₆ x 9- ¹¹ / ₁₆
300	8 x 6	12- ⁵ / ₁₆ x 10- ¹¹ / ₁₆
422 - 500	8 x 6	16- ¹⁵ / ₁₆ x 11- ¹⁵ / ₁₆
600 - 700	10- ¹ / ₂ x 4- ³ / ₄	16- ¹⁵ / ₁₆ x 11- ¹⁵ / ₁₆
800	20 x 6	27 x 14- ¹ / ₂
900	24- ¹ / ₄ x 6	31 x 14- ¹ / ₂



Speed Controllers

AMPS	Fan Size	Part #	List
5	120 - 820	FSC5	\$101
10	900	FSC10	\$225

Vibration Isolators

Sizes 100-740 Part# GIK List \$35
 Sizes 800-1000 Part# RC75 List \$167

Disconnect Switch

Single Phase Part# DS1PH List \$37

GC/GN with PSC Motor

Size	RPM	Sones @ 0"	Speed	Static Pressure / Capacity							List Price		
				.000"	.125"	.250"	.375"	0.50"	.625"	.75"	Ceiling Fan	Inline Fan	
126	550	0.3	Low	70	48	32						\$375	\$456
128	750	0.8	High	94	79	63	49	37				GC120	GN120
146	900	1.2	Low	114	103	90	77	64	50	36		\$392	\$473
148	1075	2.5	High	152	142	132	120	108	94	78		GC140	GN140
166	1100	3.0	Low	164	155	145	133	119	105	88		\$422	\$503
168	1160	3.5	High	180	171	162	150	136	121	105		GC160	GN160
186	1100	5.5	Low	231	225	218	209	199	186	170		\$476	\$558
188	1450	7.0	High	261	252	244	235	223	209	191		GC180	GN180
222	1332	1.5	Low	130	111	85						\$581	\$581
242	1483	2.5	High	158	137	112	56					GC200	GN200
322	1600	4.0	Low	204	187	165	139					\$711	\$711
342	1725	5.0	High	268	248	224	195	153				GC300	GN300
422	1500	4.0	---	308	295	282	267	250	223			\$819	\$819
522	1400	1.5	Low	213	207	201	194					\$830	\$830
542	1600	5.5	High	391	377	361	340	314	285	248		GC500	GN500
622	1400	3.5	Low	501	482	461	433	392	339			\$928	\$928
642	1500	5.0	High	602	576	548	512	471	421	350		GC600	GN600
720	1375	5.5	Low	709	682	653	619	578	535	480		\$1294	\$1294
740	1625	7.0	High	852	815	775	727	672	616	552		GC700	GN700
822	910	3.5	Low	944	925	904	879	830				\$1894	\$1894
842	974	5.0	Med	1187	1149	1106	1043	905	637			GC800	GN800
862	1098	7.0	High	1433	1355	1266	1149	995	775				
920	925	6.0	Low	1471	1415	1356	1286	1190	1003			\$2100	\$2100
940	1040	7.5	Med	1653	1565	1481	1400	1293	1089			GC900	GN900
960	1112	8.5	High	1807	1694	1588	1491	1386	1197				

GCVF/GNVF with Vari-Flow EC Motor

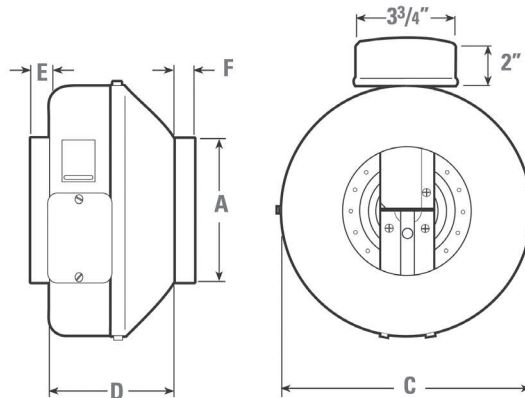
Size	Sones @ 0"	Range	Static Pressure / Capacity				List Price	
			.125"	.250"	.375"	0.50"	Ceiling Fan	Inline Fan
100	0.3	Low	40	50	60	70	\$605	\$686
	1.5	High	120	100	95	80	GCVF100	GNVF100
180	1.3	Low	100	70	80	95	\$1265	\$1347
	7.5	High	280	270	265	255	GCVF180	GNVF180
340	0.4	Low	60	85	100	150	\$1428	\$1428
	4.0	High	245	220	190	155	GCVF340	GNVF340
500	0.3	Low	80	110	140	155	\$1874	\$1874
	8.0	High	480	440	410	370	GCVF500	GNVF500
700	0.3	Low	130	180	220	255	\$2494	\$2494
	9.0	High	970	930	885	835	GCVF700	GNVF700

FG - Fantech Inline Fan



Features

- 100% leak-free housing
- Speed controllable
- Built-in thermal overload protection
- Mounting bracket and hardware included



Dimensional Data

Model	A	C	D	E	F
FG4XL	4	9- ³ / ₄	6- ¹⁵ / ₁₆	1	1
FG6XL	6	13- ¹ / ₈	7	1	1
FG8XL	8	13- ¹ / ₄	6	1- ¹ / ₈	1
FG10XL	10	13- ¹ / ₄	4- ¹³ / ₁₆	1- ¹ / ₄	1
FG12XL	12	16	6- ¹¹ / ₁₆	1- ¹ / ₂	1

Model	CFM vs. Static Pressure						Fan 120/60/1 Part #	Backdraft Damper Part #	Speed Controller Part #
	0"	.20"	.40"	.60"	.80"	1.0"			
FG4XL	170	150	134	119	103	86	\$700 FG4XL	\$63 RSK4	\$101 FSC5
FG6XL	483	450	409	369	329	289	\$983 FG6XL	\$84 RSK6	\$101 FSC5
FG8XL	502	470	428	388	351	313	\$1212 FG8XL	\$101 RSK8	\$101 FSC5
FG10XL	589	560	531	503	472	441	\$1374 FG10XL	\$140 RSK10	\$101 FSC5
FG12XL	940	880	819	746	670	596	\$1830 FG12XL	\$183 RSK12	\$101 FSC5

Panasonic Ceiling Fan Model FV-0511VKS2



Features

- Adjustable ventilation rates @ 50-80-110 CFM
- Plug-N-Play modules
- ECM brushless smart motor technology
- UL listed for tub/shower enclosure when GFCI protected
- Energy Star rated
- 4" or 6" dia. outlet
- Built-in high/low adjustable time delay

Model		Static Pressure / Capacity		List
		.10"	.25"	Fan 120/60/1 Part #
FV0511VKS2	CFM	100	106	\$494 FV0511VKS2
	SONES	< 0.30	0.70	

Available Plug-N-Play Modules

Motor Sensor

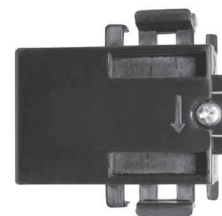


- Automatically activates when someone enters room

Part# FV-MSVK1

List \$54

Condensation Sensor

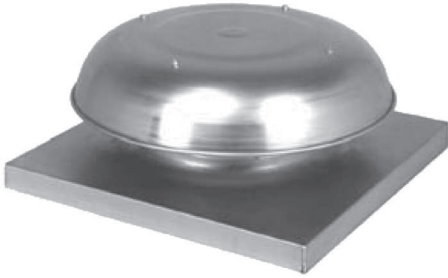


- Helps control bathroom condensation to prevent mold and mildew

Part# FV-CSVK1

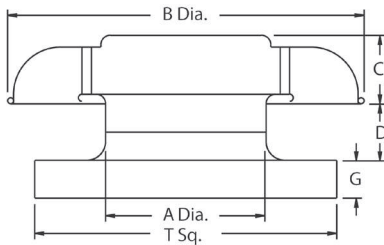
List \$137

PR - Spun Aluminum Roof Hood



Features

- Rugged aluminum construction
- Birdscreen is standard



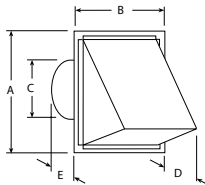
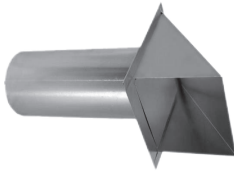
Size	A	B	C	D	G	T	Damper	Curb
PR8	8.5	18.25	4- ⁵ / ₈	3- ¹ / ₂	2	18	12 X 12	SSF 165
PR12	12.5	28.25	4- ¹³ / ₁₆	3- ¹ / ₂	2	20	14 X 14	SSF 185
PR16	16.5	28.25	5- ¹ / ₈	5- ¹ / ₂	2	28	22 X 22	SSF 265
PR20	20.5	36.50	6- ³ / ₄	4- ⁷ / ₈	2	32	26 X 26	SSF 305
PR24	24.75	42.25	7- ³ / ₄	6- ¹ / ₄	3	36	30 X 30	SSF 345

Size	Flow	Pressure Drop vs. CFM		PR Part #	Exhaust Backdraft Damper Part #	Intake Backdraft Damper Part #	13-1/2" Galv. Curb Part #
		0.1	0.25				
PR8	Relief	299	473	\$436 PR8	\$140 BD12	\$656 BDI12	\$301 SSF165
	Intake	356	543				
PR12	Relief	629	994	\$512 PR12	\$152 BD14	\$656 BDI14	\$331 SSF185
	Intake	749	1142				
PR16	Relief	1112	1758	\$730 PR16	\$228 BD22	\$735 BDI22	\$441 SSF265
	Intake	1324	2019				
PR20	Relief	1726	2729	\$951 PR20	\$257 BD26	\$735 BDI26	\$544 SSF305
	Intake	2054	3132				
PR24	Relief	2485	3929	\$1689 PR24	\$297 BD30	\$843 BDI30	\$593 SSF345
	Intake	2958	4510				

Optional Accessories

- 13-1/2" galvanized roof curb, ADC Model SSF. See Model SSFDT on page 44 for curbs with damper tray option
- Exhaust backdraft damper, Cook Model BD
- Intake backdraft damper, Cook Model BDI

Round Wall Caps



Features

- Natural aluminum finish
- Built-in backdraft damper and birdscreen
- Aluminum construction

Size	A	B	C	D	E	Part #	List
4" Dia	6.625	6.06	4	3.85	8.5	SDWVA4	\$80
6" Dia	8.125	8.00	6	4.00	8.5	SDWVA6	\$92
8" Dia	10.000	9.94	8	5.75	8.5	SDWVA8	\$119
12" Dia	14.563	14.06	12	8.75	8.5	SDWVA12	\$236

Rectangular Wall Caps



Features

- Black epoxy finish
- Built-in backdraft damper and birdscreen

Size	Part #	List
10" x 3 1/4"	RP310SBL	\$166

Roof Caps

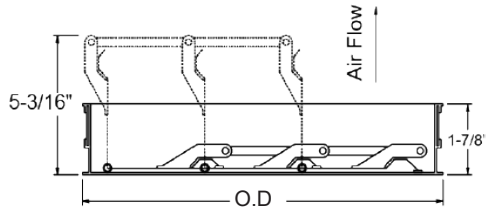


Features

- Black epoxy finish
- Built-in backdraft damper and birdscreen

Size Duct Connection	Part #	List
6 x 10	RDVG6X10	\$240
10 x 10	RDVG10X10	\$296

Exhaust Dampers



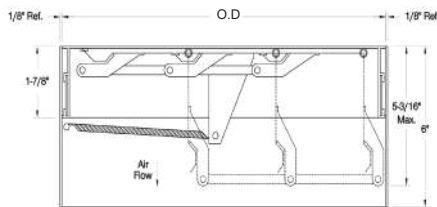
Features

- Extruded aluminum frame
- Aluminum blades

Cook Models			Backdraft Damper		
ACE/ACRU	SQN	PR-Exh	O.D. - Square	Part #	List
60 - 101	90 - 100	8	11- ³ / ₄	BD12	\$140
120, 135	-	12	13- ³ / ₄	BD14	\$152
-	120	-	15- ³ / ₄	BD16	\$161
-	165	16	21- ³ / ₄	BD22	\$228
-	195	20	25- ³ / ₄	BD26	\$257
270, 300	225	24	29- ³ / ₄	BD30	\$297

For motorized BDD kits, see below

Intake Dampers



Features

- Extruded aluminum frame
- Aluminum blades
- Spring return for closure
- 6" deep enclosure sleeve

Cook Models		Backdraft Damper	
PR-Intake	O.D. - Square	Part #	List
8	11- ³ / ₄	BDI12	\$656
12	13- ³ / ₄	BDI14	\$656
16	21- ³ / ₄	BDI22	\$735
20	25- ³ / ₄	BDI26	\$735
24	29- ³ / ₄	BDI30	\$843

Damper Motor Kits

- Used to motorize gravity exhaust only backdraft dampers
- Motor kits are provided for field assembly onto backdraft damper

Voltage	Part #	List
120V	MP115V	\$394
24V	MP24V	\$394

Replacement Motors for Belt Driven Fans



HP	Voltage / Phase	Frame	Shaft Dia.	Cook Part #	Part #	List
1/6	120V-1PH	48	1/2"	100307	16HP1PH	\$507
1/4	120V-1PH	48	1/2"	100308	25HP1PH	\$527
1/3	120V-1PH	48	1/2"	100309	33HP1PH	\$573
1/2	120V-1PH	48	1/2"	100310	50HP1PH	\$703
1/2	460/208V-3PH	56	5/8"	101190	50HP3PH	\$1010
3/4	460/208V-3PH	56	5/8"	101191	75HP3PH	\$1041
1	460/208V-3PH	143	7/8"	101162	1HP3PH	\$1178
1 1/2	460/208V-3PH	143	7/8"	101163	15HP3PH	\$1264
2	460/208V-3PH	143	7/8"	101164	2HP3PH	\$1306

Features

- Open drip proof enclosure
- 1725 RPM name plate
- Automatic reset thermal overload protection

**Three phase motors are dual voltage and can be wired as either 208 or 460 volt*

Vari-Flow Remote Speed Controller



- Allows the speed of a Vari-Flow Motor to be manually adjusted at wall
- Outputs a 0-10VDC signal, used by Vari-Flow Motors
- Mounts to a 2x4 Standard Junction Box

Part# VFRSC

Call For Pricing

Includes VFABK Air Balance Kit

Vari-Flow Pressure Controller



- Modulates fan speed via a 0-10VDC output signal to a Vari-Flow Motor to maintain a constant static or differential pressure at a given setpoint in a duct, a space or between areas
- Push button menu and digital readout
- NEMA 1 enclosure

Part# VFPC

Call For Pricing

Includes VFABK Air Balance Kit

Vari-Flow Air Balance Kit



- Integrates and simplifies the installation and enhances the function of Vari-Flow motors and controls
- Provides a convenient point to set the speed range over which the Vari-Flow motor will operate
- Integral 24 Volt transformer
- Incorporates a speed controller

Part# VFABK

Call For Pricing

ACEB - BELT DRIVEN FAN ORDERING



COOK model ACEB fans are assembled to order in ADC's UL shop

Step 1 - Obtain your fans performance RPM

Step 2 - Determine your ADC Part # by reviewing fan size, HP, voltage, RPM range and drive combo

Step 3 - Place order using ADC Part # and exact RPM

Example: ACEB80+1B+16HP, 1025 RPM

ACEB - Belt Driven Selection Chart

ACEB Size	HP	Volt-Phase	RPM Range	Drive Combo	ADC Part #
80	1/6	120V-1Ph	730-962	1A	ACEB80+1A+16HP
		120V-1Ph	979-1352	1B	ACEB80+1B+16HP
	1/4	120V-1Ph	1393-1924	1C	ACEB80+1C+25HP
100	1/6	120V-1Ph	929-1283	2A	ACEB100+2A+16HP
		120V-1Ph	1065-1471	2B	ACEB100+2B+16HP
		120V-1Ph	1342-1853	2C	ACEB100+2C+16HP
	1/4	120V-1Ph	1393-1924	2D	ACEB100+2D+25HP
		120V-1Ph	1791-2322	2E	ACEB100+2E+25HP
120	1/6	120V-1Ph	929-1283	3A	ACEB120+3A+16HP
	1/4	120V-1Ph	1132-1563	3B	ACEB120+3B+16HP
		120V-1Ph	1294-1787	3C	ACEB120+3C+25HP
	1/3	120V-1Ph	1294-1787	3D	ACEB120+3D+33HP
135	1/4	120V-1Ph	1132-1563	4A	ACEB135+4A+25HP
	1/3	120V-1Ph	1132-1563	4B	ACEB135+4B+33HP
	1/2	120V-1Ph	1455-1887	4C	ACEB135+4C+50HP1PH
	1/2	460/208V-3Ph	1455-1887	4C	ACEB135+4C+50HP3PH

SQNB - BELT DRIVEN FAN ORDERING



COOK model SQNB fans are assembled to order in ADC's UL shop

Step 1 - Obtain your fans performance RPM

Step 2 - Determine your ADC Part # by reviewing fan size, HP, voltage, RPM range and drive combo

Step 3 - Place order using ADC Part # and exact RPM

Example: SQNB100+11A+25HP, 1560 RPM

SQNB - Belt Driven Selection Chart

SQNB Size	HP	Volt - Phase	RPM Range	Drive Combo	ADC Part #
80	1/4	120V-1Ph	1380-2001	10A	SQNB80+10A+25HP
		120V-1Ph	1932-2415	10B	SQNB80+10B+25HP
100	1/4	120V-1Ph	1449-2001	11A	SQNB100+11A+25HP
120	1/4	120V-1Ph	1132-1563	12A	SQNB120+12A+25HP
	1/3	120V-1Ph	1370-1776	12B	SQNB120+12B+33HP
	1/2	120V-1Ph	1393-1924	12C	SQNB120+12C+50HP1PH
	1/2	460/208V-3Ph	1393-1924	12C	SQNB120+12C+50HP3PH
	3/4	460/208V-3Ph	1863-2415	12D	SQNB120+12D+75HP3PH

CROSS REFERENCE



RGD'S

PRODUCT TYPE	TITUS	PRICE	NAILOR	KRUEGER	METAL*AIRE
LOUVERED FACE - STEEL	TDC	SMD	6500	SH	5500S
LOUVERED FACE INDUCTION VANE	TDV	SMX	6500IV	SHV	5000SIV
LOUVERED FACE - ALUMINUM	TDC-AA	AMD	6200	5SH	5000
STAMPED LOUVERED FACE	TMS	SCD	RNS	1400	5800
PLAQUE FACE SUPPLY DIFFUSER	OMNI	SPD	UNI2	PLQ	5850
PERFORATED DIFFUSER	PAS	PDF	4320	6600	7500
PERF CURVED BLADE SUPPLY	PCS	PDC	4320CB	6500	7600
PERF SCREEN	PXP	PFRF	4302	6790	SPRTB
PERF RETURN	PAR	PDDR	4360	6490, 6690	7500R
ROUND SUPPLY	TMR	RCD	RNR	RM1	3100
BAR TYPE SUPPLY - STEEL	300RS	520DS	61DV	880V	V4004S
BAR TYPE SUPPLY - ALUMINUM	300FS	620S	51DV	5880V	V4004
BAR TYPE RETURN - STEEL	350RL	530L	6145H	S80H	SRH
BAR TYPE RETURN - ALUMINUM	350FL	630L	5145H	S580H	RH
FILTERED RETURN - STEEL	350RF1	530FF	61FB45	S80H1F	SRHF
EGG CRATE RETURN	50F	80	51EC	EGC5	CC5
LINEAR SUPPLY DIFFUSER	ML	SDS	5000	1900	6000
VAV BOXES	ESV	SDV	3001	LMHS	400TH
LINEAR SUPPLY DIFFUSER	FL	AS, JS	FL	DFL	N/A

CROSS REFERENCE



Fans

PRODUCT TYPE	COOK	GREENHECK	TWIN CITY	PENNBARRY
ALUMINUM DOWN-BLAST DIRECT DRIVE	ACED	G	DCRD	DOMEX, DX
ALUMINUM DOWN-BLAST BELT DRIVE	ACEB	GB	BCRD	DOMEX, DXB
ALUMINUM UP-BLAST DIRECT DRIVE	ACRUD	CUE	DCRU	FX
ALUMINUM UP-BLAST BELT DRIVE	ACRUB	CUBE	BCRU	FXB, FMX
ALUMINUM SIDE WALL DIRECT DRIVE	ACWD	CW	DCRW	WX
ALUMINUM SIDE WALL BELT DRIVE	ACWB	CWB	BCRW	WLB
ALUMINUM RESTAURANT EXHAUST BELT DRIVE	VCR	CUBE	BCRUR	FXBFT
ALUMINUM RESTAURANT EXHAUST BELT DRIVE	VCR-HP	CUBE-HP	BCRUR	FX-BHET
INLINE DIRECT DRIVE FAN	SQND	SQ	DSI	SX CENTREX
INLINE BELT DRIVE FAN	SQNB	BSQ	BSI	SX CENTREX
UTILITY BLOWER	CPV	SWB	BCV	DYNAMO
FILTER SUPPLY BELT DRIVE FAN	ASP	RSF	BCFS	MUFFAN
PROPELLER SIDE WALL FAN	SWD	SE1	TCPE	P
CEILING EXHAUST FAN	GC	SP	T	RA, ZEPHYR
INLINE CABINET FAN	GN	CSP	TL	ZEPHYR -TDA
GRAVITY RELIEF HOODS	GR	FABRA HOOD, FHR	TIH	AIRETTE
GRAVITY INTAKE HOODS	GI	FABRA HOOD, FHI	TIH	AIRETTE
ALUMINUM GRAVITY RELIEF	PR	GRS	GRV	DOMEX-DR
ALUMINUM GRAVITY INTAKE	TR	N/A	GRV	DOMEX-DR

