

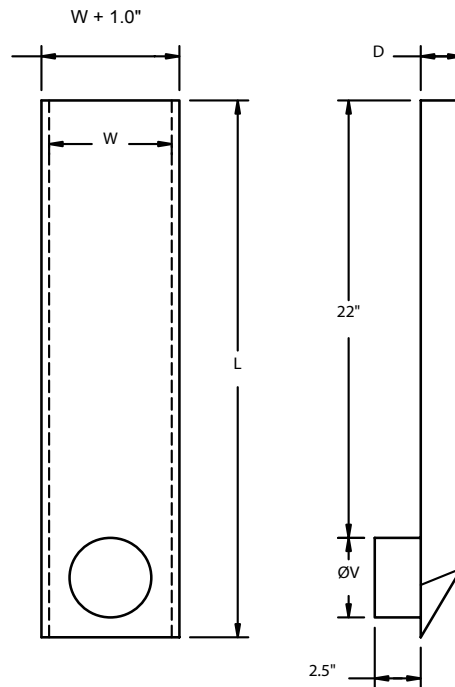


Air Distribution Corporation

Subduct Riser LSR

Specifications

	LSR 04	LSR 06	LSR 08	LSR 10
Length (L)	27.5 in	29.5 in	31.5 in	33.5 in
Width (W)	6.0 in	9.0 in	12.0 in	15.0 in
Depth (D)	2.0 in	3.5 in	4.5 in	6.0 in
Vent Connection ($\emptyset V$)	4.0 in	6.0 in	8.0 in	10.0 in



Note:

Standard round connection is Large End (Female Connection).
Small End (Male Connection) is available as a custom order.

Air Distribution Corporation reserves the right to change specifications, dimensions, and materials without notice.
www.Air-Distribution.com

MANUFACTURED BY: AIR DISTRIBUTION CORPORATION BROCKTON, MA

DWG NO.:



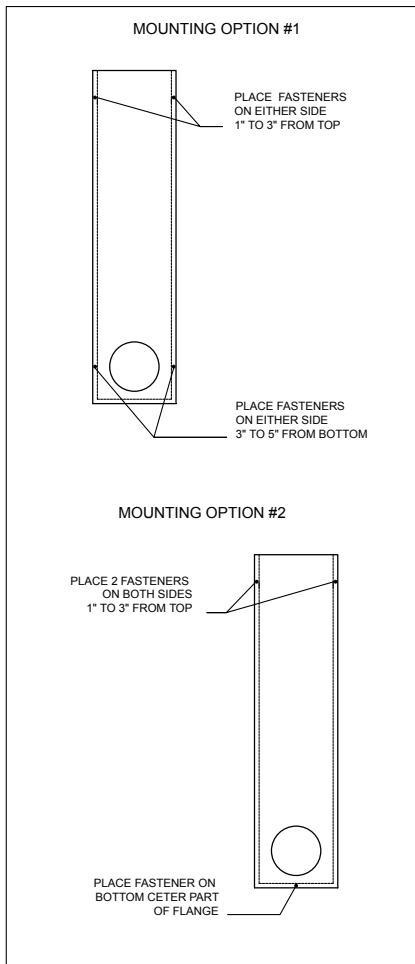
Air Distribution Corporation

Subduct Riser Installation LSR

Installation

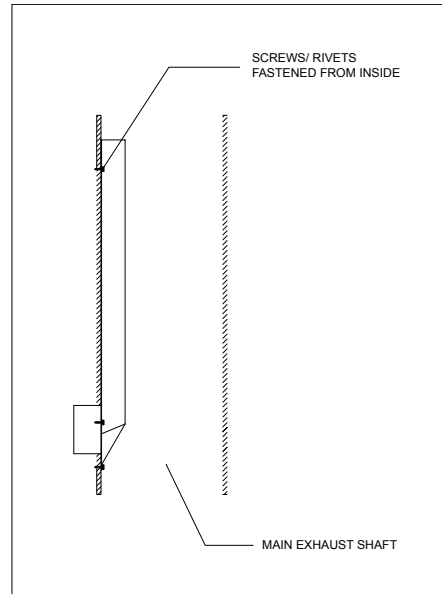
The LSR should be mounted flush against the inside of the main exhaust shaft by fastening screws or rivets through the external flange. The user may install the LSR using one of the mounting options shown in Diagram 1.

Diagram 1:



Note: When the LSR is being used to exhaust a clothes dryer, the screws or rivets **MUST** be fastened from the inside of the shaft so that the ends do not protrude into the shaft. See Diagram 2.

Diagram 2:



Air Distribution Corporation reserves the right to change specifications, dimensions, and materials without notice.
www.Air-Distribution.com

MANUFACTURED BY: AIR DISTRIBUTION CORPORATION BROCKTON, MA

DWG NO.: